

# XYZ Builders

## STAIRCASE OPTIONS



YOUR STAIR & RAILING CO.

# STANDARD SPECIFICATIONS

<b>Handrail</b>	6010 Red Oak Handrail, post to post application
<b>Wall Rail</b>	6040 Red Oak wall rail w/rosettes and .3002 bracket
<b>Newel Posts</b>	RO-4040 Series
<b>Balusters</b>	PG-5067, PG-4913, RO-4913 or base metal balusters (STB only)
<b>Cap &amp; Risers</b>	PG caps and risers (open rake) no cove or fillet
<b>Skirt</b>	PG 1x12 w/ PM Trim
<b>Kick</b>	PG 1x12 on rake, PG 1x6 on landings w/ PM Trim
<b>Curved Stairs</b>	Plywood 1/4" w/ PM-1 trim on kick & skirt w/



6010  
Colonial Hand Rail  
HT. 2-3/8"  
W. 2-1/4"



6040



Plain



Twist



PG-5067



PG-4913



RO-4913



4040



4045



4010-SP



# AVAILABLE UPGRADES



## Starter Step Package

Red Oak starter step, single, double or wedge for curved stairs. Includes volute or quarter turn. If rounded ends not shown on plan, square starter step will be installed.



4010



Volute



4592



Quarter Turn



## Box Newel Package

Oak 4592 box newel on first step and 4592 plain box newels throughout.



4592



4592-PLAIN

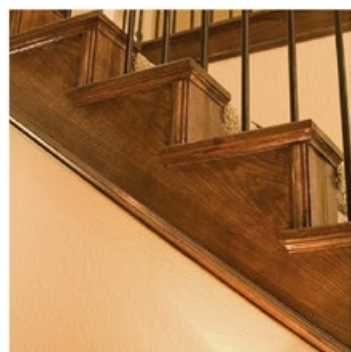


4592-SP



Rosette for wall rail brackets

7033



## Stain Package

Red Oak treads & cove, riser, kick, skirt, fillet and PM trim.



## Tread Package

Red Oak treads & cove, paint grade riser, kick, skirt, fillet and PM trim.

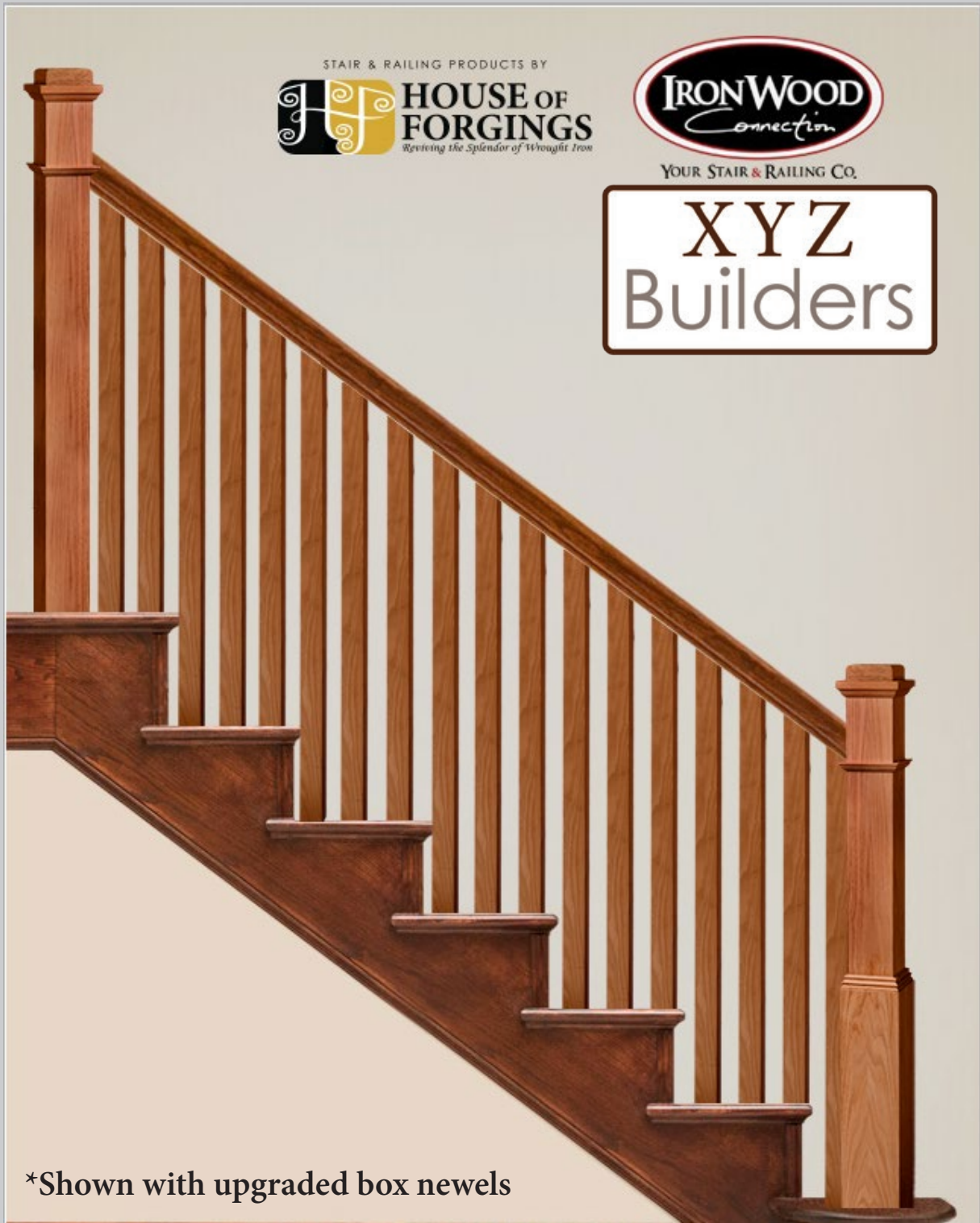
# Base Paint Grade Baluster-5067



# Base Paint Grade Baluster-4913



# Base Red Oak Baluster-4913



\*Shown with upgraded box newels

# Base Metal



16.3.19

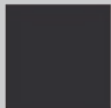
# Upgrade 1 Selection 1



BAR TYPE



SQUARE



SATIN  
BLACK (STB)




OIL RUBBED  
BRONZE (ORB)




16.3.19

# Upgrade 1 Selection 2

STAIR & RAILING PRODUCTS BY




**HOUSE OF FORGINGS**  
*Reviving the Splendor of Wrought Iron*




**IRONWOOD**  
*Connection*  
YOUR STAIR & RAILING CO.

**XYZ**  
Builders



BAR TYPE



SQUARE

**\*Shown with upgraded stain package**



SATIN  
BLACK (STB)

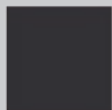


OIL RUBBED  
BRONZE (ORB)

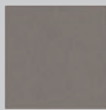


16.3.19

# Upgrade 1 Selection 3



SATIN  
BLACK (STB)

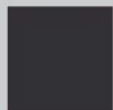


ASH GREY (AG)

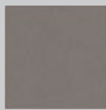


16.3.19

# Upgrade 1 Selection 4



SATIN  
BLACK (STB)



ASH GREY (AG)



16.3.19

# Upgrade 2 Selection 1

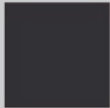


STAIR & RAILING PRODUCTS BY  
**HOUSE OF FORGINGS**  
*Revealing the Splendor of Wrought Iron*

**IRONWOOD**  
*Connection*

YOUR STAIR & RAILING CO.

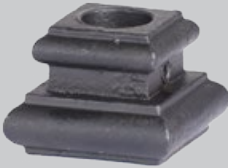
**XYZ**  
Builders



SATIN  
BLACK (STB)

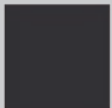


ASH GREY (AG)



16.3.35

# Upgrade 2 Selection 2



SATIN  
BLACK (STB)



ASH GREY (AG)

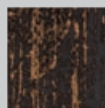


16.3.35

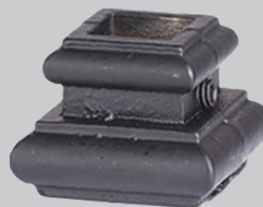
## Upgrade 2 Selection 3



SATIN  
BLACK (STB)



OIL RUBBED  
BRONZE (ORB)

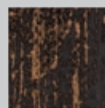


16.3.25

# Upgrade 3 Selection 1



SATIN  
BLACK (STB)



OIL RUBBED  
BRONZE (ORB)

## Upgrade 3 Selection 2

STAIR & RAILING PRODUCTS BY

**HOUSE OF FORGINGS**  
*Revealing the Splendor of Wrought Iron*

**IRONWOOD Connection**  
YOUR STAIR & RAILING CO.

**XYZ Builders**

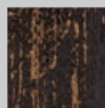
BAR TYPE

SQUARE HAMMERED

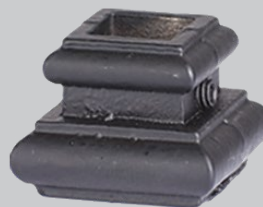
\*Shown with upgraded box newels



SATIN  
BLACK (STB)

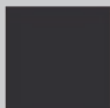


OIL RUBBED  
BRONZE (ORB)

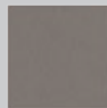


16.3.25

# Horizontal Level 4



SATIN  
BLACK (STB)

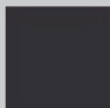


ASH GREY (AG)

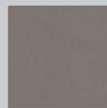
# Horizontal Level 5



\*Includes 4000 newels w/caps and 6007 fillet for skirt



SATIN  
BLACK (STB)

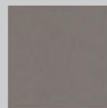


ASH GREY (AG)

# Horizontal Level 6



SATIN  
BLACK (STB)

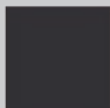


ASH GREY (AG)

# Horizontal Level 7



\*Includes 4000 newels w/caps and 6007 fillet for skirt



SATIN  
BLACK (STB)



ASH GREY (AG)