

STAIR & RAILING PRODUCTS BY



**HOUSE OF
FORGINGS**

Powder Coated & Stainless Steel

**House of Forgings
is the benchmark in
the stair and railing
industry, offering an
unsurpassed
selection of quality
products and
expert service.**

Our vast selection of products will meet the needs of even the most discerning customers. Whether selecting a powder coated finish or stainless steel, our newels, balusters and accessories will compliment a broad range of architectural styles.

STAIR & RAILING PRODUCTS BY



Table of Contents

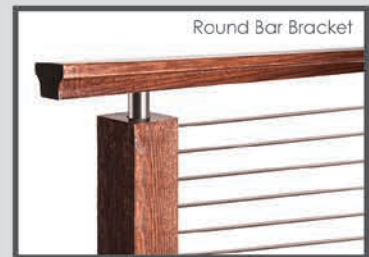
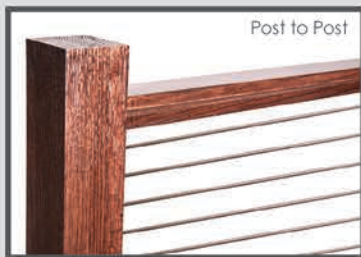
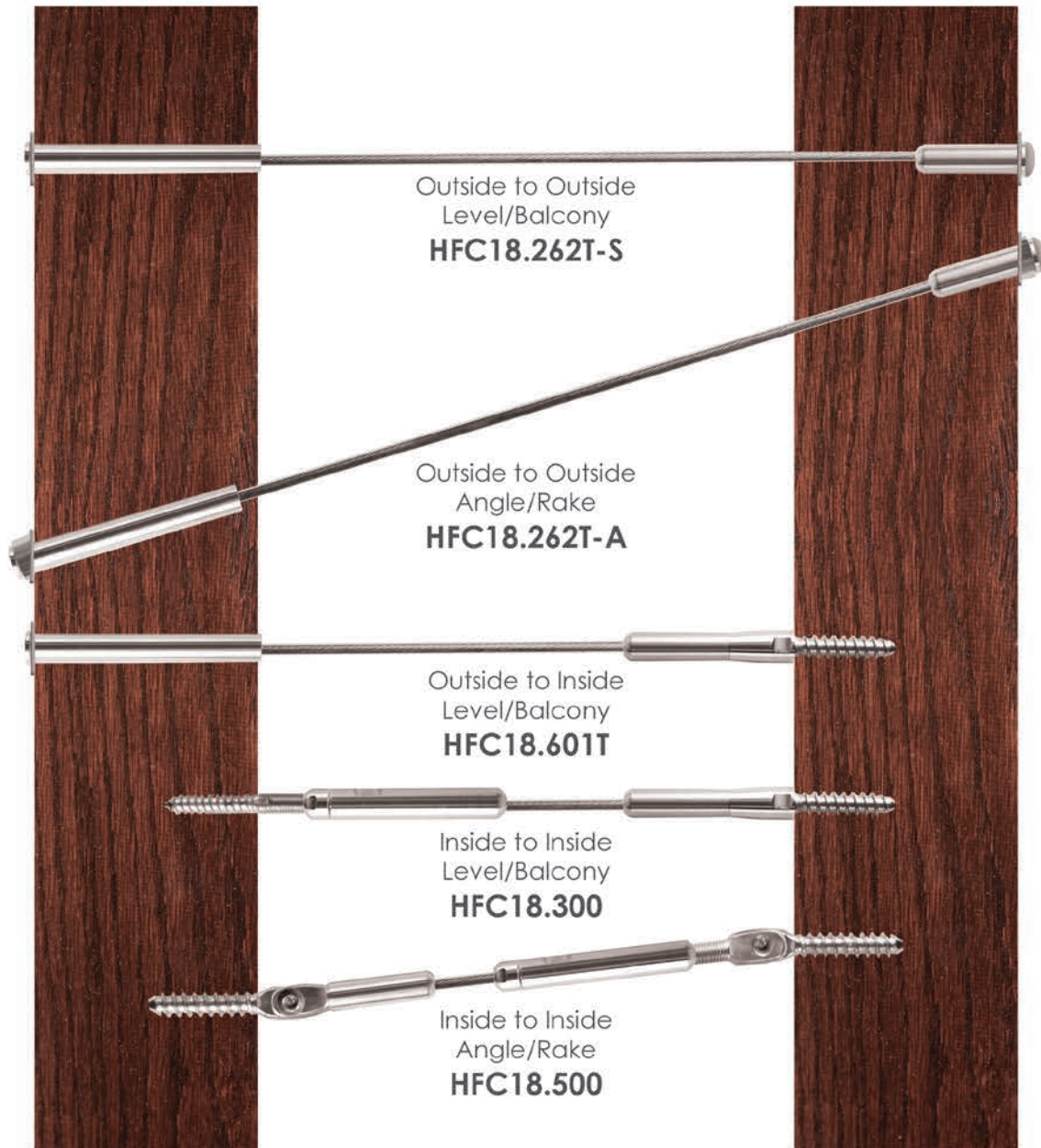
POWDER COATED & STAINLESS STEEL	2-49
Stainless Steel Cable Railing	2-5
Finishes & Patinas	6-7
Aalto	8-11
Tuscan	12-17
Orleans	18-19
Monte Carlo	20-21
Endecor	22-23
Designer	24-25
Stainless	26-27
Santa Fe	28-29
Gothic	30-31
Round	32-35
Versatile	36-39
Ribbon	40-43
Twist	44-47
Accessories	48-49
FORGED PANELS	50-71
Rebecca	51-53
Tuscany	54-57
Seville	58-59
Milano	60-62
Bordeaux	64-67
Regency	68-71
WOOD	72-83
Newels & Balusters	74-75
Elegante & Box Newels	76-77
Handrail & Fittings	78-79
Treads	80
Starter Steps	81
Lumber & Plywood	81
Moulding	82
Accessories	83
COMPANY & PRODUCT INFORMATION	84



Red Oak 4000 Newels, 6084 Handrail with stainless round bar bracket (shown)

Create the ideal modern aesthetic by combining stainless steel cable and rich oak. The expansive views allowed for by cable make it ideal for balconies as well as staircases.

— Stainless Steel —
Cable Railing



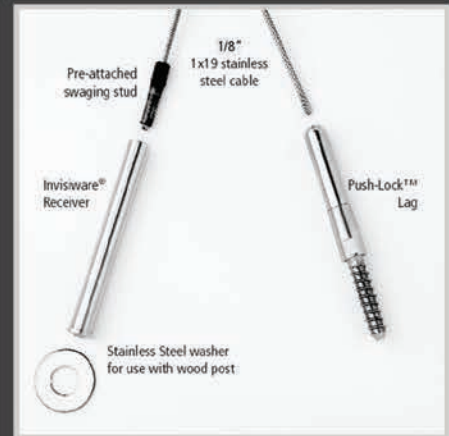
Outside to Outside
Level/Balcony
HFC18.262T-S



Outside to Outside
Angle/Rake
HFC18.262T-A



Outside to Inside
Level/Balcony
HFC18.601T



Pre Swaged 1/8" cable (5',10',15',18')

- HFC18-5T** (5ft) Swaged Threaded Stud
- HFC18-10T** (10ft) Swaged Threaded Stud
- HFC18-15T** (15ft) Swaged Threaded Stud
- HFC18-18T** (18ft) Swaged Threaded Stud

Inside to Inside
Level/Balcony
HFC18.300



Inside to Inside
Angle/Rake
HFC18.500

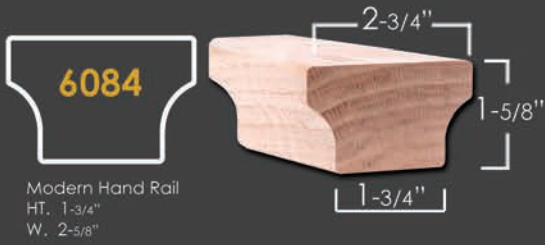


Pre Swaged 1/8" cable (5',10',15',18')

- HFC18-5** (5ft) Swaged Ferrule
- HFC18-10** (10ft) Swaged Ferrule
- HFC18-15** (15ft) Swaged Ferrule
- HFC18-18** (18ft) Swaged Ferrule

* All components are made from 316 Stainless Steel for marine grade corrosion resistance.

Modern Handrail



6084
Modern Hand Rail
HT. 1-3/4"
W. 2-5/8"

NEW PRODUCT
EXCLUSIVE

6084 Straight Rail
Available in 8' & 16'
No fittings available

NEW PRODUCT
EXCLUSIVE

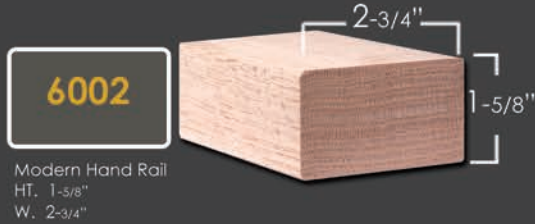
Wall Mount Handrail Bracket



HF17.4002
HT. 2-1/2"
Base = 1-1/2" x 2"
Extends 3-1/4" off wall
ADJUSTABLE



mounting hardware included



6002
Modern Hand Rail
HT. 1-5/8"
W. 2-3/4"

6002 Straight Rail
Available in 8' & 16'
No fittings available

Newel



4000
HT. 54"
W = 3-1/4"

Intermediate Newel



4923-41
HT. 41"
W = 1-3/4"



Stainless Newel

(cut to length for brackets)

NEW PRODUCT
EXCLUSIVE



HF17.1.2-T
Ends: 1-3/16" Rd.
HT. 47"
Wt. 5.7 lbs.
TUBULAR

NEW PRODUCT
EXCLUSIVE

Newel Mount Handrail Bracket



HF17.4001
HT. 1-3/4"
Base = 1-1/2" sq.
ADJUSTABLE



mounting hardware included

Newel Cap



SQUARE CAP-4000
3-1/4" Square
3/4" x 1" dowel

NEW PRODUCT
EXCLUSIVE



Insert Tube



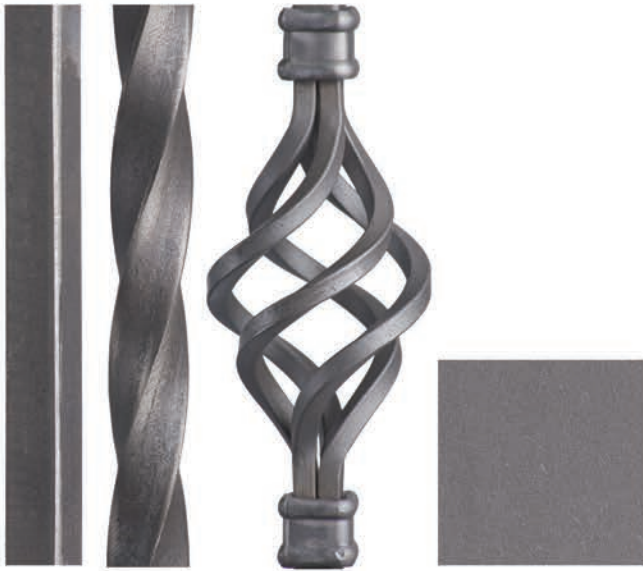
HFC18.TUBE

Release Key



HFC18.KEY

* All wood parts stocked in Red Oak



RAW IRON (RAW)

This is raw (unfinished) iron that needs to be painted or powder coated.



SATIN BLACK (STB)



ASH GREY (AG)



SILVER VEIN (SP)



COPPER VEIN (CV)



OIL RUBBED BRONZE (ORB)



OIL RUBBED COPPER (ORC)



ANTIQUÉ NICKEL (AN)



VINTAGE BRASS (VB)



SATIN CLEAR (SC)

This is a clear finish over RAW/unfinished iron, variations in surface color may occur.



STAINLESS STEEL

Finishes & Patinas

House of Forgings provides an unsurpassed selection of designs in the highest quality powdercoated finishes available. Our hand applied patinas enhance the lines and hammered detail of each unique piece. As interior design trends move forward, count on us to carry the latest styles & finishes.

THESE FINISHES HAVE BEEN PROFESSIONALLY PHOTOGRAPHED WITH THE HIGHEST INTEGRITY. OUR GOAL IS TO PRODUCE THE MOST REALISTIC MATCH TO THE ACTUAL FINISHES, HOWEVER SOME SLIGHT VARIANCES MAY OCCUR.

All images are the sole property of House of Forgings, LLC. and cannot be copied or reproduced without written permission.

AALTO



Ash Grey (shown)

Ash Grey (shown)

Our Aalto collection is a compliment to the modern design aesthetic. Adorn any space with the clean lines and open detail of these modern balusters and panels.



Satin Black (shown)



Satin Black (shown)



Satin Black (shown)



Ash Grey (shown)



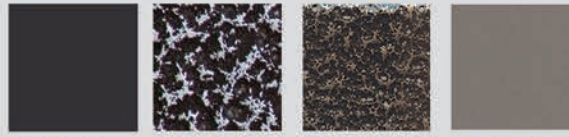
Ash Grey (shown)

AALTO

SQUARE



Finishes & Patinas



SATIN BLACK (STB) SILVER VEIN (SP) COPPER VEIN (CV) ASH GREY (AG)

	NEWELS	HF16.5.8	HF16.5.8-T	BALUSTERS	HF16.2.1	HF16.2.1-T	HF16.2.1-50	HF16.1.30	HF16.1.30-T	HF16.1.31	HF16.1.31-T	HF16.1.32	HF16.1.32-T	HF16.6.1	HF16.6.2	HF16.6.3	HF16.6.4	HF16.6.5	HF16.6.7	HF9.4.1	HF9.4.2	HF9.4.3	HF9.4.4	HF9.4.11	HF9.4.22	HF9.4.33	HF9.4.44
STB		•			•	•	•	•		•		•		•	•	•	•	•	•	•	•	•	•	•	•	•	•
SP		•			•	•		•		•		•															
CV		•			•	•		•		•		•															
AG			•			•			•		•		•	•	•	•	•	•	•	•	•	•	•	•	•	•	•

ACCESSORIES

Level base shoes
 Level base collars
 Angled base shoes
 Newel mounting kit

HF16.3.1, HF16.3.19
HF16.3.4, HF16.3.5,
HF16.3.2, HF16.3.30
HF16.2.3

Photos: A. A.
 Photos: D. H.
 Photos: E. G.
 Photos: T.

For photos and full accessory details see pages 48-49



Ash Grey (shown)



NEWEL

HF 16.5.8
Ends: 1-3/16" Sq.
Height: 48"
Wt. 19 lbs.
SOLID

HF 16.5.8-T
Ends: 1-3/16" Sq.
Height: 48"
Wt. 4.8 lbs.
TUBULAR



HF 16.2.1
Ends: 1/2" Sq.
Height: 44"
Wt. 3 lbs.
SOLID

HF 16.2.1-T
Ends: 1/2" Sq.
Height: 44"
Wt. 1.2 lbs.
TUBULAR

HF 16.2.1-50
Ends: 1/2" Sq.
Height: 50"
Wt. 3.2 lbs.
SOLID



HF 16.1.30
Ends: 1/2" Sq.
Height: 44"
Wt. 3.4 lbs.
SOLID

HF 16.1.30-T
Ends: 1/2" Sq.
Height: 44"
Wt. 1.6 lbs.
TUBULAR



HF 16.1.31
Ends: 1/2" Sq.
Height: 44"
Wt. 3.6 lbs.
SOLID

HF 16.1.31-T
Ends: 1/2" Sq.
Height: 44"
Wt. 1.75 lbs.
TUBULAR



HF 16.1.32
Ends: 1/2" Sq.
Height: 44"
Wt. 10 lbs.
SOLID

HF 16.1.32-T
Ends: 1/2" Sq.
Height: 44"
Wt. 5 lbs.
TUBULAR



HF 16.6.1
Ends: 1/2" Sq.
Height: 44"
Wt. 1.2 lbs.
TUBULAR

NEW



HF 16.6.7
Ends: 1/2" Sq.
Height: 44"
Wt. 1.6 lbs.
TUBULAR



HF 16.6.2
Ends: 1/2" Sq.
Height: 44"
Wt. 1.6 lbs.
TUBULAR



HF 16.6.3
Ends: 1/2" Sq.
Height: 44"
Wt. 1.7 lbs.
TUBULAR



HF 16.6.4
Ends: 1/2" Sq.
Height: 44"
Wt. 1.7 lbs.
TUBULAR



HF 16.6.5
Ends: 1/2" Sq.
Height: 44"
Wt. 1.8 lbs.
TUBULAR

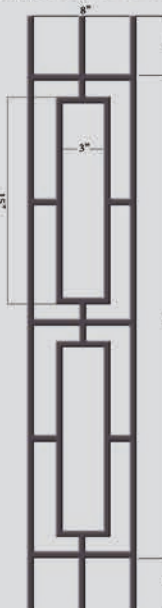
Rake panels fit all angles up to 40 degrees

NEW

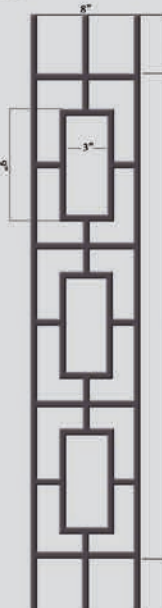
NEW



HF 9.4.1
Ends: 1/2" Sq.
Height: 44"
Wt. 4.4 lbs.
TUBULAR (Level)



HF 9.4.2
Ends: 1/2" Sq.
Height: 44"
Wt. 4.8 lbs.
TUBULAR (Level)



HF 9.4.3
Ends: 1/2" Sq.
Height: 44"
Wt. 5 lbs.
TUBULAR (Level)



HF 9.4.4
Ends: 1/2" Sq.
Height: 44"
Wt. 5 lbs.
TUBULAR (Level)



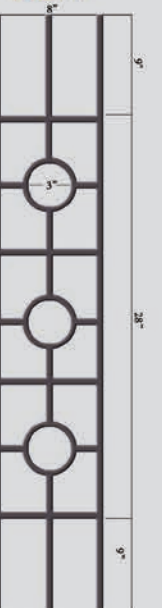
HF 9.4.11
Ends: 1/2" Sq.
Height: 46"
Wt. 4.5 lbs.
TUBULAR (Rake)



HF 9.4.22
Ends: 1/2" Sq.
Height: 46"
Wt. 4.7 lbs.
TUBULAR (Rake)



HF 9.4.33
Ends: 1/2" Sq.
Height: 46"
Wt. 4.9 lbs.
TUBULAR (Rake)



HF 9.4.44
Ends: 1/2" Sq.
Height: 46"
Wt. 4.9 lbs.
TUBULAR (Rake)



Oil Rubbed Bronze (shown)

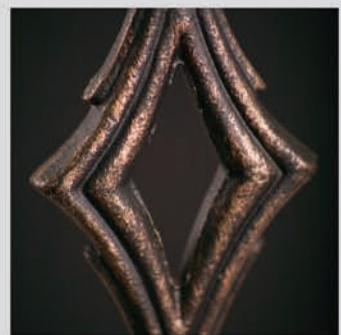
The craftsmanship in these hand-forged balusters exude character and beauty nearly impossible to duplicate. Our Tuscan series is available in both round forged and square hammered profiles. Bring the rustic charm of old world Italy into your home with this unique series.

Oil Rubbed Bronze (shown)

TUSCAN



Vintage Brass (shown)



Oil Rubbed Bronze (shown)



Finishes & Patinas



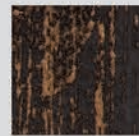
RAW IRON
(RAW)



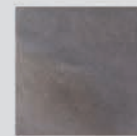
SATIN BLACK
(STB)



COPPER VEIN
(CV)



OIL RUBBED
BRONZE
(ORB)



SATIN CLEAR
(SC)



VINTAGE
BRASS
(VB)

	NEWELS	HF1.1.22	HF1.1.8	HF1.1.9	HF1.1.16	HF1.1.20	HF1.1.21	BALUSTERS	HF2.9.21	HF2.1.5	HF2.1.6	HF2.1.7	HF2.1.9	HF2.1.8	HF2.1.11	HF2.6.8	HF2.6.9	HF2.6.7	HF2.10.2	HF2.10.4	HF2.10.3	HF2.11.40	HF2.11.41
RAW	•	•	•	•	•	•	•	•	•	•	•	•	•	•	•	•	•	•	•	•	•	•	•
STB	•	•	•	•	•	•	•	•	•	•	•	•	•	•	•	•	•	•	•	•	•	•	•
CV					•				•											•	•	•	
ORB		•	•	•	•	•	•		•	•	•	•	•	•	•	•	•	•	•	•	•	•	•
SC	•				•		•		•							•	•	•	•	•	•		
VB					•	•			•											•	•	•	•

ACCESSORIES

- Level base shoes
- Level base collars
- Angled base shoes
- Adjustable level base shoes
- Adjustable angled base shoes
- Newel mounting kit

- HF16.3.26
- HF16.3.40, HF16.3.43
- HF16.3.27
- HF16.3.44, HF16.3.46
- HF16.3.45, HF16.3.47
- HF16.3.33

- Photos: J.
- Photos: K. O.
- Photos: N.
- Photos: R.
- Photos: S.
- Photos: U.

For photos and full accessory details see pages 48-49



NEWEL
47-1/4"

NEWEL
17-1/8" (top section), 5-3/8" (middle section), 24-3/4" (bottom section)

NEWEL
18-1/8" (top section), 3" (middle section), 26-1/8" (bottom section)

NEWEL
17-1/8" (top section), 5" (middle section), 25-1/8" (bottom section)

NEWEL
14-13/16" (top section), 8-14/16" (middle section), 24-3/16" (bottom section)

NEWEL
14-3/8" (top section), 2-3/4" (middle section), 22-1/4" (bottom section)

NEWEL
17-1/2" (top section), 4-1/2" (middle section), 22" (bottom section)

NEWEL
12-1/2" (top section), 14-1/2" (middle section), 17" (bottom section)

NEWEL
9" (top section), 4-1/2" (middle section), 11" (bottom section), 4-1/2" (bottom section), 15" (bottom section)

HF 1.1.22
Ends: 1" Rd.
Height: 47-1/4"
Wt. 18 lbs.

HF 1.1.8
Ends: 1" Rd.
Height: 47-1/4"
Wt. 18 lbs.

HF 1.1.9
Ends: 1" Rd.
Height: 47-1/4"
Wt. 18 lbs.

HF 1.1.16
Ends: 1" Rd.
Height: 47-1/4"
Wt. 18 lbs.

HF 1.1.20
Ends: 1" Rd.
Height: 47-1/4"
Wt. 18 lbs.

HF 1.1.21
Ends: 1" Rd.
Tapered
Height: 47-1/4"
Wt. 18 lbs.

HF 2.1.5
Ends: 9/16" Rd.
Height: 44"
Wt. 2.5 lbs.

HF 2.1.6
Ends: 9/16" Rd.
Height: 44"
Wt. 4.2 lbs.

HF 2.1.7
Ends: 9/16" Rd.
Height: 44"
Wt. 3 lbs.



HF 2.1.9
 Ends : 9/16" Rd.
 Height: 44"
 Wt. 2.4 lbs.



HF 2.1.8
 Ends : 9/16" Rd.
 Height: 44"
 Wt. 4.2 lbs.



HF 2.1.11
 Ends : 9/16" Rd.
 Height: 44"
 Wt. 3 lbs.



HF 2.6.8
 Ends : 9/16" Rd.
 Tapered
 Height: 44"
 Wt. 3.2 lbs.



HF 2.6.9
 Ends : 9/16" Rd.
 Height: 44"
 Wt. 4.2 lbs.



HF 2.6.7
 Ends : 9/16" Rd.
 Tapered
 Height: 44"
 Wt. 3.8 lbs.



HF 2.9.21
 Ends : 9/16" Rd.
 Height: 44"
 Wt. 2.4 lbs.



HF 2.10.2
 Ends : 9/16" Rd.
 Height: 44"
 Wt. 3.2 lbs.



HF 2.10.4
 Ends : 9/16" Rd.
 Height: 44"
 Wt. 4.2 lbs.



HF 2.10.3
 Ends : 9/16" Rd.
 Height: 44"
 Wt. 3.6 lbs.



HF 2.11.40
 Ends : 9/16" Rd.
 Height: 44"
 Wt. 4 lbs.



HF 2.11.41
 Ends : 9/16" Rd.
 Height: 44"
 Wt. 5.2 lbs.



Finishes & Patinas



RAW IRON
(RAW)



SATIN BLACK
(STB)



COPPER VEIN
(CV)



OIL RUBBED
BRONZE
(ORB)



SATIN CLEAR
(SC)



VINTAGE
BRASS
(VB)

	NEWELS	HF1.1.10	HF1.1.11	HF1.1.14	HF1.1.14-T	HF1.1.15	HF1.1.15-T	BALUSTERS	HF2.9.12	HF2.9.11	HF2.9.13	HF2.9.3	HF2.9.4	HF2.9.8	HF2.9.5	HF2.9.6	HF2.1.2	HF2.1.1	HF2.9.20	HF2.9.20-T	HF2.9.28	HF2.9.28-T	HF2.9.27	HF2.9.26	HF2.9.26-T	HF2.9.29	HF2.9.36	HF2.9.37
RAW		•	•	•		•			•	•	•	•	•	•	•	•			•		•		•	•				
STB		•	•	•	•	•	•		•	•	•	•	•	•	•	•	•	•	•	•	•	•	•	•	•	•	•	•
CV			•	•		•			•	•	•			•					•		•		•	•				
ORB		•	•	•	•	•	•		•	•	•	•	•	•	•	•	•	•	•	•	•	•	•	•	•	•	•	•
SC			•	•		•			•	•	•			•					•		•		•	•				
VB			•	•		•			•	•	•	•	•	•	•	•			•		•		•	•				

ACCESSORIES

- Level base shoes
- Level base collars
- Angled base shoes
- Adjustable level base shoes
- Adjustable angled base shoes
- Newel mounting kit

- HF16.3.25
- HF16.3.41, HF16.3.42
- HF16.3.28
- HF16.3.44, HF16.3.46
- HF16.3.45, HF16.3.47
- HF16.3.31

- Photos: C.
- Photos: D. H.
- Photos: G.
- Photos: R.
- Photos: S.
- Photos: T.

For photos and full accessory details see pages 48-49



NEWEL

15-1/2"

8-1/2"

23-1/4"

HF 1.1.10
Ends : 1" Sq.
Tapered
Height: 47-1/4"
Wt. 18 lbs.

NEWEL

16-1/4"

7"

24"

HF 1.1.11
Ends : 1" Sq.
Tapered
Height: 47-1/4"
Wt. 18 lbs.

NEWEL

47-1/4"

HF 1.1.14-T
Ends : 1" Sq.
Height: 47-1/4"
Wt. 2.30 lbs.
TUBULAR

NEWEL

17-1/8"

5"

25-1/8"

HF 1.1.15-T
Ends : 1" Sq.
Height: 47-1/4"
Wt. 5.30 lbs.
TUBULAR

NEWEL

17-1/2"

4-1/2"

22"

HF 2.9.12
Ends : 9/16" Sq.
Tapered
Height: 44"
Wt. 3.8 lbs.

NEWEL

12-1/2"

14-1/2"

17"

HF 2.9.11
Ends : 9/16" Sq.
Height: 44"
Wt. 5 lbs.

NEWEL

10"

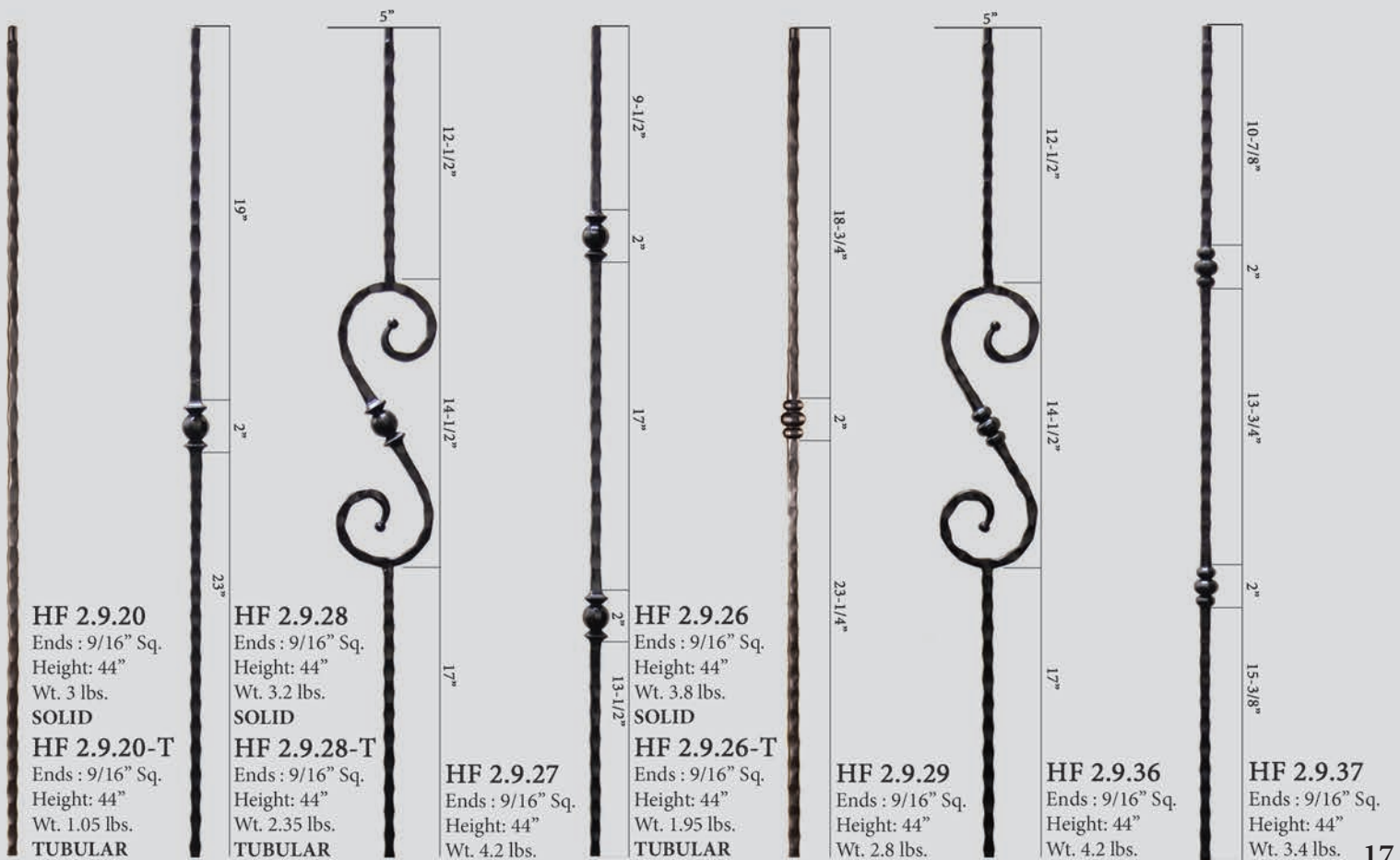
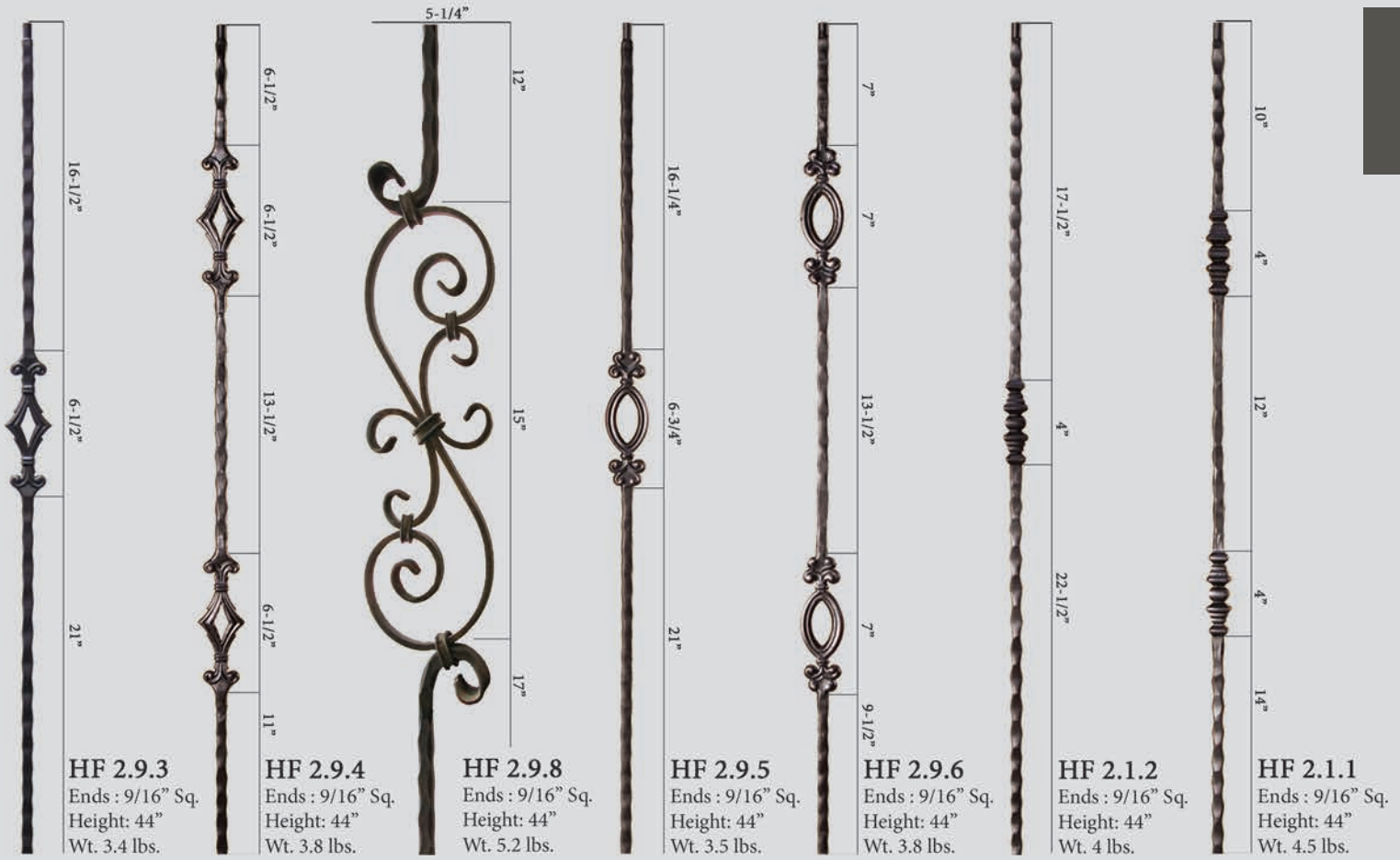
4-1/2"

10-1/2"

4-1/2"

14-1/2"

HF 2.9.13
Ends : 9/16" Sq.
Tapered
Height: 44"
Wt. 5.5 lbs.



ORLEANS

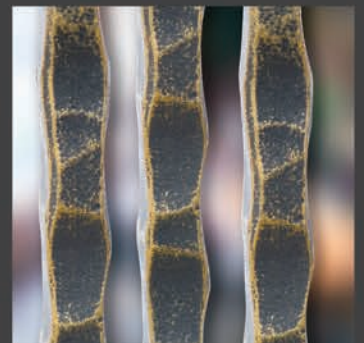


Oil Rubbed Bronze (shown)

House of Forgings is pleased to feature our Orleans Series balusters which is a tribute to the renowned culture, customs and architecture of the great city of New Orleans. These exclusive designs are available with single or double elements and finished in Oil Rubbed Bronze and Vintage Brass patinas.

Orleans

Oil Rubbed Bronze (shown)



Vintage Brass (shown)

ORLEANS

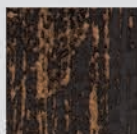
SQUARE HAND HAMMERED



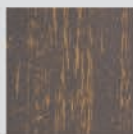
Finishes & Patinas



RAW IRON
(RAW)



OIL RUBBED
BRONZE
(ORB)



VINTAGE
BRASS
(VB)



NEWEL

47"

HF 1.1.14
Ends : 1" Sq.
Height: 47"
Wt. 18 lbs.



44"

HF 2.9.20
Ends : 9/16" Sq.
Height: 44"
Wt. 3 lbs.



12-1/2"

8-1/2"

23"

HF 2.9.23
Ends : 9/16" Sq.
Height: 44"
Wt. 3.5 lbs.



5-1/2"

8-1/2"

5-1/4"

8-1/2"

16-1/4"

HF 2.9.24
Ends : 9/16" Sq.
Height: 44"
Wt. 3.9 lbs.

ACCESSORIES

Level base shoes

Level base collars

Angled base shoes

Adjustable level base shoes

Adjustable angled base shoes

Newel mounting kit

HF16.3.25

HF16.3.41, HF16.3.42

HF16.3.28

HF16.3.44, HF16.3.46

HF16.3.45, HF16.3.47

HF16.3.31

Photos: C.

Photos: D. H.

Photos: G.

Photos: R.

Photos: S.

Photos: T.

For photos and full accessory details see pages 48-49

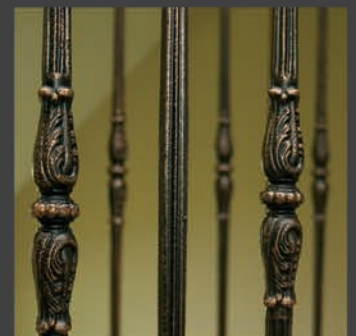


MONTE CARLO



Oil Rubbed Bronze (shown)

Drawing inspiration from the great Roman columns, the Monte Carlo series stands alone in style and elegance. The robust designs compliment the prominence of even the grandest estates. The intricately cast components are highlighted by the Oil Rubbed Bronze patina.



Oil Rubbed Bronze (shown)

MONTE CARLO

ROUND



Finishes & Patinas



SATIN BLACK
(STB)



OIL RUBBED
BRONZE
(ORB)



NEWEL

HF 18.1.1-T
Ends : 1-3/16" Rd.
Height: 48"
Wt. 18.55 lbs.
TUBULAR

*Middle section is hollow cast iron,
ends are hollow cast steel



HF 18.2.1-T
Ends : 5/8" Rd.
Height: 44"
Wt. 1.75 lbs.
TUBULAR

*Middle section is hollow cast aluminum, ends are hollow cast steel



HF 18.2.2-T
Ends : 5/8" Rd.
Height: 44"
Wt. 1.50 lbs.
TUBULAR

ACCESSORIES

Level base shoes
Angled base shoes
Newel mounting kit

HF16.3.50
HF16.3.51
HF16.3.14

Photos: I.
Photos: M.
Photos: U.

For photos and full accessory details see pages 48-49



ENDECOR



Vintage Brass (shown)

A House of Forgings exclusive, the Endecor® balustrade system has been featured by some of the top homebuilders in the nation. For the discerning client who wants to stand apart, these balusters are truly unique in form and function.

US D672,064 S
BALUSTER END PIECE



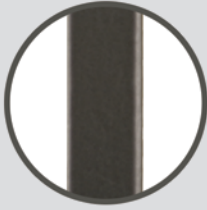
Satin Black (shown)



Additional U.S and Canadian patents pending.

ENDECOR®

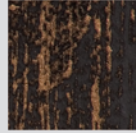
SQUARE



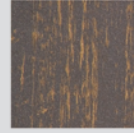
Finishes & Patinas



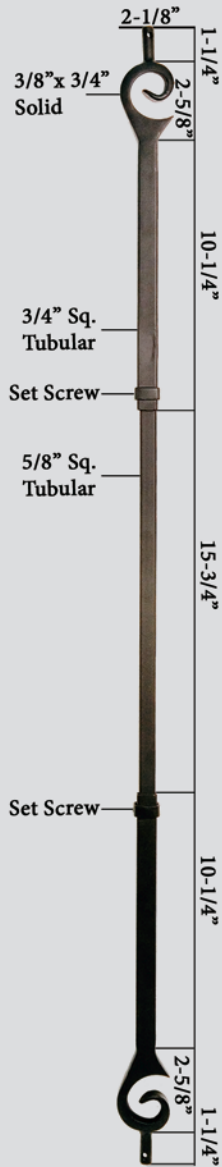
SATIN BLACK
(STB)



OIL RUBBED
BRONZE
(ORB)

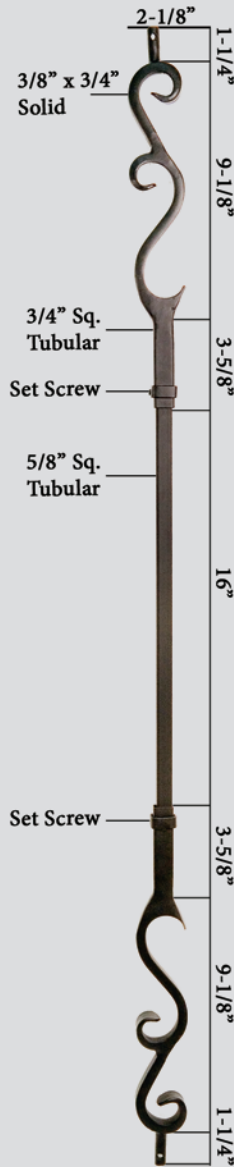


VINTAGE
BRASS
(VB)



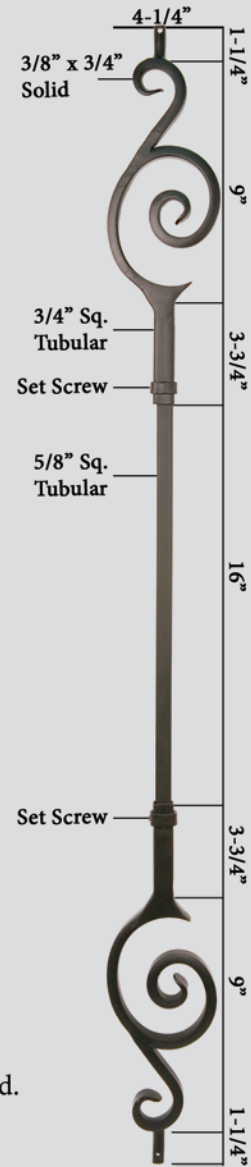
HF16.7.1

Ends : 9/16" Rd.
Height: 44"
Wt. 3.8 lbs.



HF16.7.2

Ends : 9/16" Rd.
Height: 44"
Wt. 3.8 lbs.



HF16.7.3

Ends : 9/16" Rd.
Height: 44"
Wt. 3.8 lbs.

↑
US D672,064 S
BALUSTER END PIECE

DESIGNER



Oil Rubbed Bronze (shown)

The designer series offers an upgraded look at an affordable price for homebuilders and homeowners alike. These hollow balusters are offered in square or round and compliment a wide range of architectural styles.

Oil Rubbed Bronze (shown)



Oil Rubbed Bronze (shown)

DESIGNER TUBULAR

ROUND

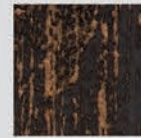
SQUARE



Finishes & Patinas



SATIN BLACK
(STB)



OIL RUBBED
BRONZE
(ORB)



HF 16.8.1
Ends : 5/8" Rd.
Height: 44"
Wt. 2 lbs.
TUBULAR



HF 16.8.2
Ends : 5/8" Rd.
Height: 44"
Wt. 2 lbs.
TUBULAR



HF 16.8.3
Ends : 5/8" Rd.
Height: 44"
Wt. 2 lbs.
TUBULAR



HF 16.8.4
Ends : 5/8" Rd.
Height: 44"
Wt. 3 lbs.
TUBULAR



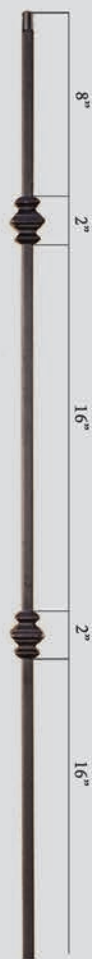
HF 16.8.5
Ends : 5/8" Rd.
Height: 44"
Wt. 3 lbs.
TUBULAR



HF 16.8.6
Ends : 5/8" Sq.
Height: 44"
Wt. 2 lbs.
TUBULAR



HF 16.8.10
Ends : 5/8" Sq.
Height: 44"
Wt. 2 lbs.
TUBULAR



HF 16.8.11
Ends : 5/8" Sq.
Height: 44"
Wt. 2 lbs.
TUBULAR



HF 16.8.8
Ends : 5/8" Sq.
Height: 44"
Wt. 3 lbs.
TUBULAR



HF 16.8.9
Ends : 5/8" Sq.
Height: 44"
Wt. 4 lbs.
TUBULAR

ACCESSORIES

Level base shoes
Angled base shoes

HF16.3.35, HF16.3.38
HF16.3.36, HF16.3.39

Photos: J. C.
Photos: N. G.

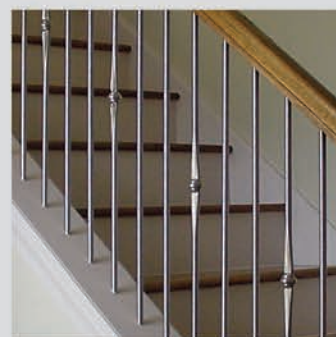
For photos and full accessory details see pages 48-49



STAINLESS STEEL



Stainless steel is a mainstay in the modern and contemporary home decor market. The simple, honest lines of this profile is the perfect compliment to your urban dwelling. Now, offered in a more affordable tubular style for the budget savvy buyer.



STAINLESS STEEL



ROUND



STAINLESS STEEL

<p>NEWEL</p>	<p>NEWEL</p>					
<p>HF17.1.2 Ends : 1-3/16" Rd. Height: 47" Wt. 18 lbs. SOLID</p>	<p>HF17.12.1-T Ends : 1-3/16" Rd. Height: 47" Wt. 5.7 lbs. TUBULAR</p>	<p>HF17.11.3 Ends : 9/16" Rd. Height: 44" Wt. 3.8 lbs. SOLID</p>	<p>HF17.11.4 Ends : 9/16" Rd. Height: 44" Wt. 4 lbs. SOLID</p>	<p>HF17.11.5 Ends : 9/16" Rd. Height: 44" Wt. 3.5 lbs. SOLID</p>	<p>HF17.11.21-T Ends : 9/16" Rd. Height: 44" Wt. 1.25 lbs. TUBULAR</p>	<p>HF17.11.23-T Ends : 9/16" Rd. Height: 44" Wt. 1.25 lbs. TUBULAR</p>

ACCESSORIES

Level base collar
Newel mounting kit

HF17.11.22
HF17.2.3

Photos: L.
Photos: V.

For photos and full accessory details see pages 48-49

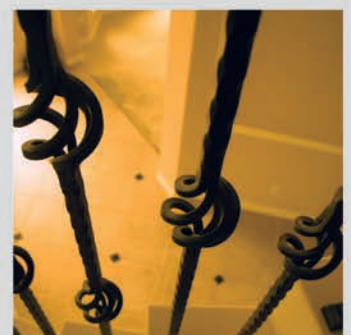




SANTA FE

Satin Black (shown)

Our Santa Fe collection of edge hammered balusters are reminiscent of the old world Spanish architecture found in rustic Mexican villas. The bold, distinct hammering is the key to turning your home into an impressive estate.



Satin Black (shown)

SANTA FE

SQUARE EDGE HAMMERED



Finishes & Patinas



HF 16.3.8
Ends : 9/16" Sq.
Height: 44"
Wt. 3.7 lbs.



HF 16.1.26
Ends : 9/16" Sq.
Height: 44"
Wt. 4 lbs.



HF 16.1.27
Ends : 9/16" Sq.
Height: 44"
Wt. 4.5 lbs.



HF 16.1.15
Ends : 9/16" Sq.
Height: 44"
Wt. 3 lbs.



HF 16.1.22
Ends : 9/16" Sq.
Height: 44"
Wt. 3.6 lbs.

ACCESSORIES

- Level base shoes
- Angled base shoes
- Adjustable level base shoes
- Adjustable angled base shoes

- HF16.3.3**
- HF16.3.17**
- HF16.3.44, HF16.3.46**
- HF16.3.45, HF16.3.47**

- Photos: A.
- Photos: E.
- Photos: R.
- Photos: S.

For photos and full accessory details see pages 48-49

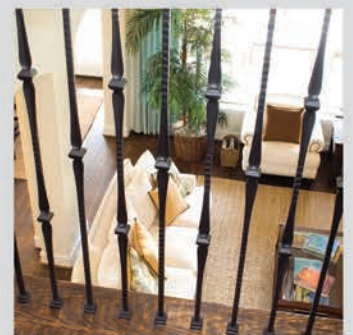




GOTHIC

Oil Rubbed Copper (shown)

The inspiration for our Gothic series was the timeless ironwork featured in many European castles and estates. These prominent designs will compliment old world hardware and fixtures found throughout many homes today.



Oil Rubbed Copper (shown)

GOTHIC

SQUARE FACE HAMMERED



Finishes & Patinas



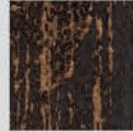
RAW IRON
(RAW)



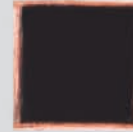
SATIN BLACK
(STB)



COPPER VEIN
(CV)



OIL RUBBED
BRONZE
(ORB)



OIL RUBBED
COPPER
(ORC)



NEWEL

HF 16.5.6
Ends : 1-3/16" Sq.
Height: 48"
Wt. 22 lbs.



HF 16.1.7
Ends : 9/16" Sq.
Height: 44"
Wt. 4 lbs.



HF 16.5.2
Ends : 9/16" Sq.
Height: 44"
Wt. 3.5 lbs.



HF 16.1.8
Ends : 9/16" Sq.
Height: 44"
Wt. 3.8 lbs.



HF 16.1.9
Ends : 9/16" Sq.
Height: 44"
Wt. 4.5 lbs.

ACCESSORIES

Level base shoes

Level base collars

Angled base shoes

Adjustable level base shoes

Adjustable angled base shoes

Newel mounting kit

HF16.3.3, HF16.3.20, HF16.3.25

HF16.3.41, HF16.3.42

HF16.3.17, HF16.3.28

HF16.3.44, HF16.3.46

HF16.3.45, HF16.3.47

HF16.2.3

Photos: A. A. C.

Photos: D. H.

Photos: E. G.

Photos: R.

Photos: S.

Photos: T.

For photos and full accessory details see pages 48-49





Satin Black (shown)

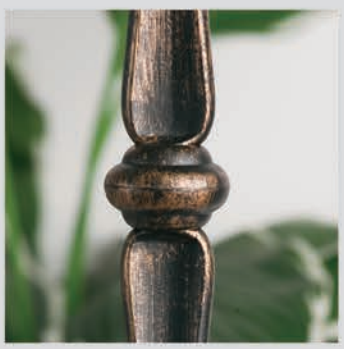
The style of this collection provides a sleek appearance that strikes a perfect balance between traditional and contemporary.

Ash Grey (shown)

ROUND



Satin Black (shown)



Oil Rubbed Bronze (shown)



Copper Vein (shown)



Ash Grey/Satin Black (shown)

ROUND

ROUND SMOOTH



Finishes & Patinas



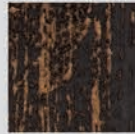
RAW IRON
(RAW)



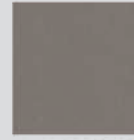
SATIN BLACK
(STB)



COPPER VEIN
(CV)

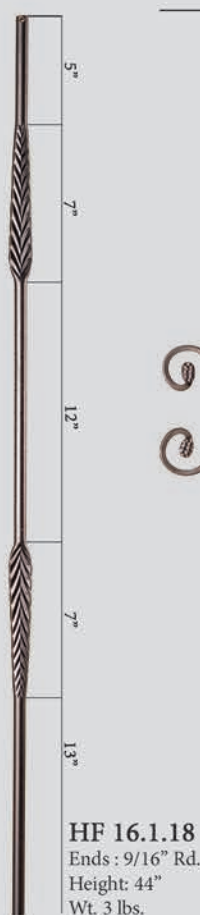


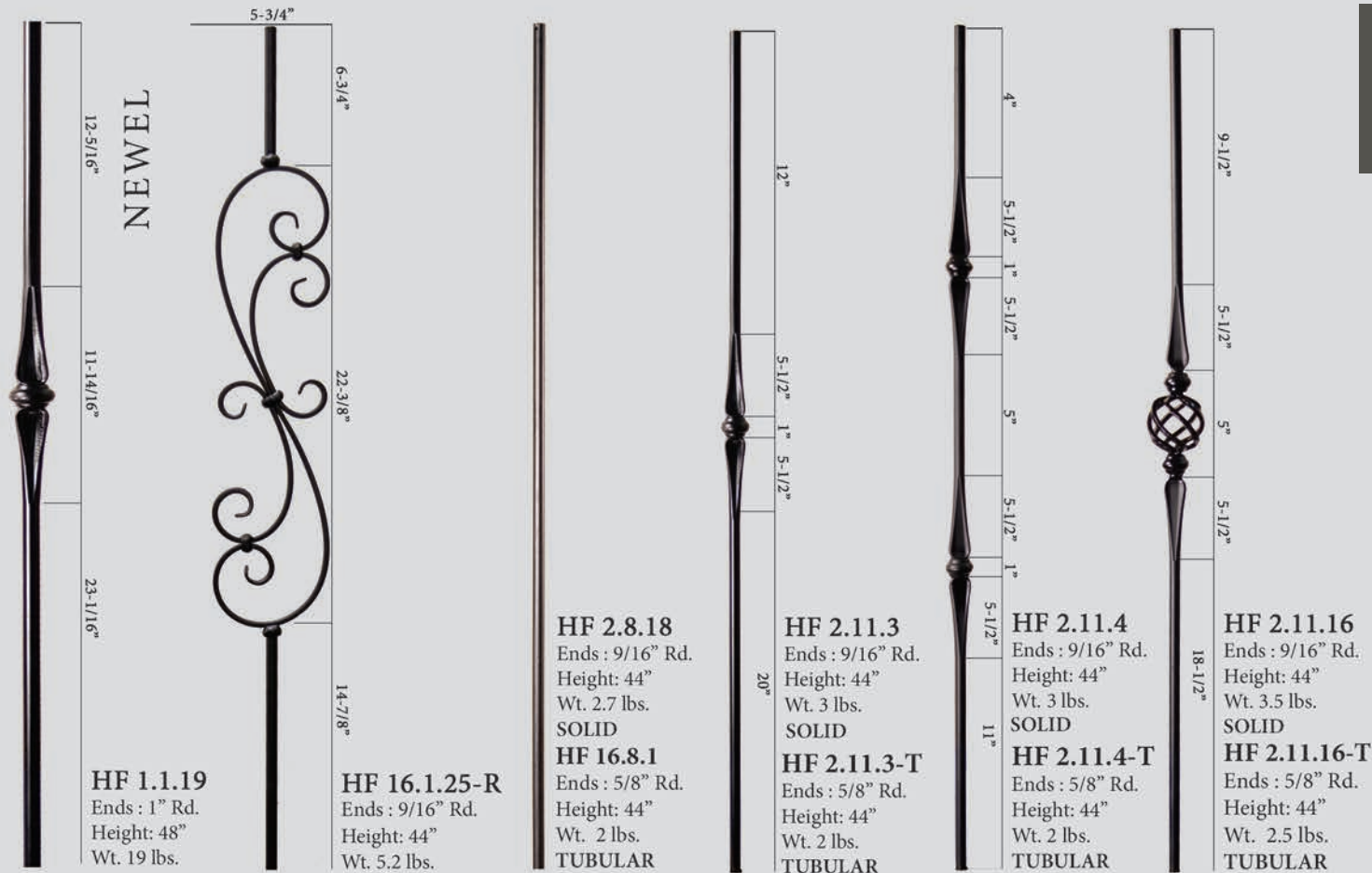
OIL RUBBED
BRONZE
(ORB)



ASH GREY
(AG)

	NEWELS	HF16.5.10	HF16.5.11	HF16.5.11-T	HF1.1.19	BALUSTERS	HF16.2.2	HF16.1.17	HF16.1.18	HF16.1.19	HF16.1.20	HF16.1.25-R	HF2.11.3	HF2.11.3-T	HF2.11.4	HF2.11.4-T	HF2.11.16	HF2.11.16-T	HF2.8.18	HF16.8.1	HF16.8.12	HF16.8.13	
RAW			•		•							•	•	•	•	•	•	•	•	•			
STB		•	•		•		•	•	•	•	•	•	•	•	•	•	•	•	•		•	•	•
CV		•	•				•	•	•	•	•	•											
ORB			•		•							•	•	•	•	•	•	•	•				
AG				•										•		•				•	•	•	•





NEW



NEW



ACCESSORIES

- Level base shoes
- Level base collars
- Angled base shoes
- Adjustable level base shoes
- Adjustable angled base shoes
- Level base shoe, fits 5/8"
- Angled base shoe, fits 5/8"
- Newel mounting kit

- HF16.3.13, HF16.3.26**
- HF16.3.40, HF16.3.43**
- HF16.3.16, HF16.3.27**
- HF16.3.44, HF16.3.46**
- HF16.3.45, HF16.3.47**
- HF16.3.35**
- HF16.3.36**
- HF16.3.14, HF16.3.33**

- Photos: L. J.
- Photos: K. O.
- Photos: M. N.
- Photos: R.
- Photos: S.
- Photos: J.
- Photos: N.
- Photos: U.

For photos and full accessory details see pages 48-49 

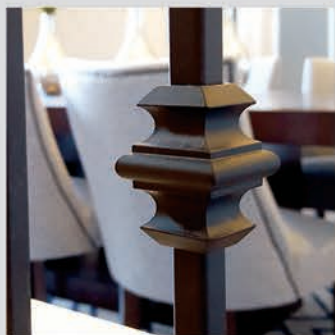


Copper Vein (shown)

The endless baluster combinations in this series offers a match for your individual taste and style. These balusters compliment our Scroll, Twist and Ribbon series.

Silver Vein (shown)

VERSATILE



VERSATILE SQUARE



Finishes & Patinas



	NEWELS	HF16.5.8	HF16.5.8-T	HF16.5.9	HF16.5.9-T	BALUSTERS	HF16.2.1	HF16.2.1-T	HF16.2.1-50	HF16.1.34	HF16.1.34-T	HF16.1.35	HF16.1.35-T	HF16.1.45	HF16.1.45-T	HF2.10.1	HF2.2.3	HF16.1.25	HF16.1.25-T	HF16.1.25-S
RAW		•		•			•	•		•	•	•	•				•	•	•	
STB		•		•			•	•	•	•	•	•	•	•	•	•	•	•	•	•
AG			•		•			•			•		•						•	
SP		•		•			•	•		•	•	•	•	•		•			•	
CV		•		•			•	•		•	•	•	•	•	•	•			•	•
ORB		•		•			•	•		•	•	•	•	•	•	•			•	•
ORC		•		•			•	•		•	•	•	•	•	•	•			•	•
AN		•		•			•			•	•	•	•	•				•		

NEWEL

NEWEL

HF 16.5.8
Ends : 1-3/16" Sq.
Height: 48"
Wt. 19 lbs.
SOLID

HF 16.5.8-T
Ends : 1-3/16" Sq.
Height: 48"
Wt. 4.8 lbs.
TUBULAR

HF 16.5.9
Ends : 1-3/16" Sq.
Height: 48"
Wt. 20 lbs.
SOLID

HF 16.5.9-T
Ends : 1-3/16" Sq.
Height: 48"
Wt. 9.7 lbs.
TUBULAR

HF 16.2.1
Ends : 1/2" Sq.
Height: 44"
Wt. 3 lbs.
SOLID

HF 16.2.1-T
Ends : 1/2" Sq.
Height: 44"
Wt. 1.2 lbs.
TUBULAR

HF 16.2.1-50
Ends : 1/2" Sq.
Height: 50"
Wt. 3.2 lbs.
SOLID

HF 16.1.34
Ends : 1/2" Sq.
Height: 44"
Wt. 4 lbs.
SOLID

HF 16.1.34-T
Ends : 1/2" Sq.
Height: 44"
Wt. 1.35 lbs.
TUBULAR

HF 16.1.35
Ends : 1/2" Sq.
Height: 44"
Wt. 3.5 lbs.
SOLID

HF 16.1.35-T
Ends : 1/2" Sq.
Height: 44"
Wt. 1.5 lbs.
TUBULAR

HF 16.1.45
Ends : 1/2" Sq.
Height: 44"
Wt. 4 lbs.
SOLID

HF 16.1.45-T
Ends : 1/2" Sq.
Height: 44"
Wt. 1.55 lbs.
TUBULAR



HF 2.10.1
 Ends : 1/2" Sq.
 Height: 44"
 Wt. 4.2 lbs.



HF 2.2.3
 Ends : 1/2" Sq.
 Height: 44"
 Wt. 3 lbs.



HF 16.1.25
 Ends : 1/2" Sq.
 Height: 44"
 Wt. 5.2 lbs.
 SOLID

HF 16.1.25-T
 Ends : 1/2" Sq.
 Height: 44"
 Wt. 3.85 lbs.
 TUBULAR




HF 16.1.25-S
 Ends : 1/2" Sq.
 Height: 44"
 Wt. 5.2 lbs.

ACCESSORIES

- Level base shoes **HF16.3.1, HF16.3.19, HF16.3.29**
- Level base collars **HF16.3.4, HF16.3.5,**
- Angled base shoes **HF16.3.2, HF16.3.30**
- Adjustable level base shoes **HF16.3.44, HF16.3.46**
- Adjustable angled base shoes **HF16.3.45, HF16.3.47**
- Versatile style knuckle **HF16.5.1**
- Newel mounting kit **HF16.2.3**

- Photos: A. A. C.
- Photos: D. H.
- Photos: E. G.
- Photos: R.
- Photos: S.
- Photos: F.
- Photos: T.

For photos and full accessory details see pages 48-49 



Satin Black (shown)

The ribbon style twist in this series pairs nicely with balusters from the Scroll and Versatile series. The ribbon is accented nicely by the Oil Rubbed Bronze patina as well as the Copper Vein finish.

Copper Vein (shown)

RIBBON



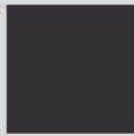
RIBBON SQUARE



Finishes & Patinas



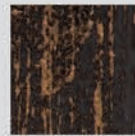
RAW IRON (RAW)



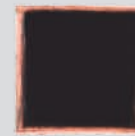
SATIN BLACK (STB)



COPPER VEIN (CV)



OIL RUBBED BRONZE (ORB)



OIL RUBBED COPPER (ORC)

	NEWELS	HF16.5.7	BALUSTERS	HF16.1.5	HF16.1.6	HF16.3.6	HF16.3.7	HF16.1.10	HF16.1.11
RAW		•		•	•				
STB		•		•	•	•	•	•	•
CV		•		•	•	•	•	•	•
ORB		•		•	•	•	•	•	•
ORC		•		•	•	•	•	•	•





HF 16.1.10
 Ends : 1/2" Sq.
 Height: 44"
 Wt. 3.6 lbs.



HF 16.1.11
 Ends : 1/2" Sq.
 Height: 44"
 Wt. 4.1 lbs.

ACCESSORIES

Level base shoes
 Level base collars
 Angled base shoes
 Adjustable level base shoes
 Adjustable angled base shoes
 Versatile style knuckle
 Newel mounting kit

HF16.3.1, HF16.3.19, HF16.3.29
HF16.3.4, HF16.3.5,
HF16.3.2, HF16.3.30
HF16.3.44, HF16.3.46
HF16.3.45, HF16.3.47
HF16.5.1
HF16.2.3

Photos: A. A. C.
 Photos: D. H.
 Photos: E. G.
 Photos: R.
 Photos: S.
 Photos: F.
 Photos: T.

For photos and full accessory details see pages 48-49





Copper Vein (shown)

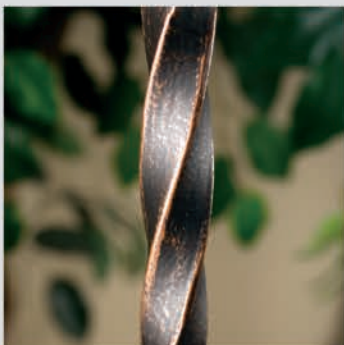
This popular twist and basket design is a mainstay featured in many new homes. These balusters and newels are offered in an extensive range of finishes and patinas. They combine seamlessly with profiles from the Scroll and Versatile series.

Oil Rubbed Copper (shown)

TWIST



Satin Black (shown)



Oil Rubbed Bronze (shown)



Antique Nickel (shown)


TWIST SQUARE



Finishes & Patinas



	NEWELS	HF16.5.4	HF16.5.4-T	HF16.5.5	HF16.5.5-T	BALUSTERS	HF16.1.1	HF16.1.1-T	HF16.1.2	HF16.1.2-T	HF16.1.3	HF16.1.3-T	HF16.1.4	HF16.1.4-T	HF16.1.21	HF16.1.21-T	HF16.1.16	HF16.2.4	HF16.2.5	HF16.2.6	HF16.1.41
RAW		•		•			•	•	•	•	•	•	•	•	•	•		•	•	•	
STB		•		•			•	•	•	•	•	•	•	•	•	•		•	•	•	•
AG			•		•																
SP		•		•			•	•	•	•	•	•	•	•	•	•					
CV		•		•			•	•	•	•	•	•	•	•	•	•					
ORB		•		•			•	•	•	•	•	•	•	•	•	•					
ORC		•		•			•	•	•	•	•	•	•	•	•	•					
AN		•		•			•	•	•	•	•	•	•	•	•	•					



NEWEL


13-1/4"

11-1/2"

23-1/4"

HF 16.5.4
Ends : 1-3/16" Sq.
Height: 48"
Wt. 18 lbs.
SOLID

HF 16.5.4-T
Ends : 1-3/16" Sq.
Height: 48"
Wt. 5.5 lbs.
TUBULAR



NEWEL

5-1/2"

7-1/4"

3-1/2"

6-1/2"


3-1/2"

7-1/4"

14-1/2"

HF 16.5.5
Ends : 1-3/16" Sq.
Height: 48"
Wt. 20 lbs.
SOLID

HF 16.5.5-T
Ends : 1-3/16" Sq.
Height: 48"
Wt. 7.6 lbs.
TUBULAR



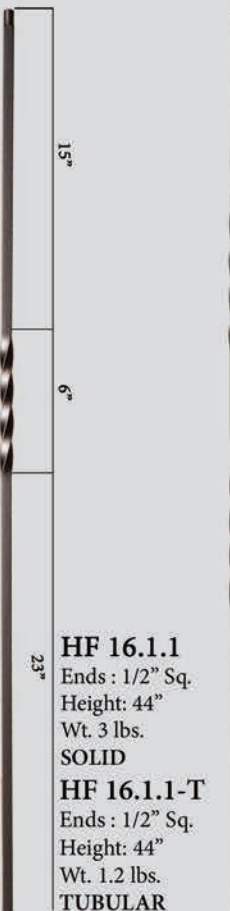
15"

6"

23"

HF 16.1.1
Ends : 1/2" Sq.
Height: 44"
Wt. 3 lbs.
SOLID

HF 16.1.1-T
Ends : 1/2" Sq.
Height: 44"
Wt. 1.2 lbs.
TUBULAR



9"

6"

6"


6"

6"

17"

HF 16.1.2
Ends : 1/2" Sq.
Height: 44"
Wt. 3 lbs.
SOLID

HF 16.1.2-T
Ends : 1/2" Sq.
Height: 44"
Wt. 1.15 lbs.
TUBULAR



6"

6"

3"

5-1/2"


3-1/2"

6"

14"

HF 16.1.3
Ends : 1/2" Sq.
Height: 44"
Wt. 4 lbs.
SOLID

HF 16.1.3-T
Ends : 1/2" Sq.
Height: 44"
Wt. 1.55 lbs.
TUBULAR



8"

5-1/2"

8"

5-1/2"

17"

HF 16.1.4
Ends : 1/2" Sq.
Height: 44"
Wt. 4 lbs.
SOLID

HF 16.1.4-T
Ends : 1/2" Sq.
Height: 44"
Wt. 1.95 lbs.
TUBULAR



HF 16.1.21
Ends : 1/2" Sq.
Height: 44"
Wt. 3 lbs.
SOLID

HF 16.1.21-T
Ends : 1/2" Sq.
Height: 44"
Wt. 1.3 lbs.
TUBULAR

HF 16.1.16
Ends : 1/2" Sq.
Height: 44"
Wt. 4.5 lbs.



HF 16.2.4
Ends : 1/2" Sq.
Height: 40"
Wt. 3 lbs.



HF 16.2.5
Ends : 1/2" Sq.
Height: 40"
Wt. 3 lbs.



HF 16.2.6
Ends : 1/2" Sq.
Height: 40"
Wt. 3 lbs.



HF 16.1.41
Ends : 1/2" Sq.
Height: 44"
Wt. 7 lbs.

ACCESSORIES

Level base shoes
Level base collars
Angled base shoes
Adjustable level base shoes
Adjustable angled base shoes
Versatile style knuckle
Newel mounting kit

HF16.3.1, HF16.3.19, HF16.3.29
HF16.3.4, HF16.3.5,
HF16.3.2, HF16.3.30
HF16.3.44, HF16.3.46
HF16.3.45, HF16.3.47
HF16.5.1
HF16.2.3

Photos: A. A. C.
Photos: D. H.
Photos: E. G.
Photos: R.
Photos: S.
Photos: F.
Photos: T.

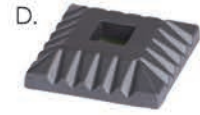
For photos and full accessory details see pages 48-49



ACCESSORY SPECIFICATIONS

Photo	Part #	Description	RAW	STB	AG	SP	CV	ORB	ORC	AN	VB	SC
1/2" Square Baluster Accessories												
A.	HF16.3.1	Level base shoe, fits 1/2" square balusters, 1-5/16" square base, aluminum		•		•	•		•	•		
A.	HF16.3.19	Level base shoe with set screw, fits 1/2" square balusters, 1-5/16" square base, aluminum	•	•	•	•	•	•	•	•		
E.	HF16.3.2	Angled base shoe with set screw, fits 1/2" square balusters, 1-5/16" base, aluminum	•	•	•	•	•	•	•	•		
B.	HF16.3.21	Level base shoe with screw mount, fits 1/2" square balusters, 1-9/16" square base, aluminum		•			•					
F.	HF16.5.1	Versatile style knuckle with set screw, fits 1/2" square balusters, 1-7/16" square, aluminum	•	•		•	•	•	•	•		
C.	HF16.3.29	Oil Rubbed Bronze, level base shoe with set screw, fits 1/2" square balusters, 1-1/4" square base, cast iron		•				•				
G.	HF16.3.30	Oil Rubbed Bronze, angled base shoe with set screw, fits 1/2" square balusters, 1-1/4" base, cast iron						•				
D.	HF16.3.4	Level base collar, fits 1/2" square balusters, 2" square base, aluminum		•			•	•	•			
H.	HF16.3.5	Level base collar, fits 1/2" square balusters, 1-5/16" round base, aluminum		•			•	•	•			
9/16" Square Baluster Accessories												
A.	HF16.3.3	Level base shoe, fits 9/16" square balusters, 1-5/16" square base, aluminum		•			•		•			
A.	HF16.3.20	Level base shoe with set screw, fits 9/16" square balusters, 1-5/16" square base, aluminum		•			•	•	•			
E.	HF16.3.17	Angled base shoe with set screw, fits 9/16" square balusters, 1-5/16" base, aluminum		•			•	•	•			
C.	HF16.3.25	Level base shoe with set screw, fits 9/16" Tuscan square balusters, 1-1/4" square base, cast iron	•	•			•	•			•	•
G.	HF16.3.28	Angled base shoe with set screw, fits 9/16" Tuscan square balusters, 1-1/4" base, cast iron	•	•			•	•			•	•
D.	HF16.3.41	Level base collar, fits 9/16" square balusters, 2" square base, aluminum		•			•	•				
H.	HF16.3.42	Level base collar, fits 9/16" square balusters, 1-5/16" round base, aluminum		•			•	•			•	
5/8" Square Baluster Accessories												
C.	HF16.3.38	Level base shoe with set screw, fits 5/8" square balusters, 1-1/4" square base, cast iron		•				•				
G.	HF16.3.39	Angled base shoe with set screw, fits 5/8" square balusters, 1-1/4" base, cast iron		•				•				
9/16" Round Baluster Accessories												
I.	HF16.3.13	Level base shoe, fits 9/16" round balusters, 1-5/16" square base, aluminum		•			•					
M.	HF16.3.16	Angled base shoe with set screw, fits 9/16" round balusters, 1-5/16" base, aluminum		•			•					
J.	HF16.3.26	Level base shoe with set screw, fits 9/16" round balusters, 1-1/4" square base, cast iron		•			•	•			•	•
N.	HF16.3.27	Angled base shoe with set screw, fits 9/16" round balusters, 1-1/4" base, cast iron		•			•	•			•	•
K.	HF16.3.40	Level base collar, fits 9/16" round balusters, 2" square base, cast iron		•			•	•				
O.	HF16.3.43	Level base collar, fits 9/16" round balusters, 1-5/16" round base, cast iron		•				•			•	
L.	HF17.11.22	Level base collar, fits 9/16" round stainless steel balusters, 1-1/2" round base, stainless steel										
5/8" Round Baluster Accessories												
J.	HF16.3.35	Level base shoe with set screw, fits 5/8" round balusters, 1-1/4" square base, cast iron		•	•		•	•				
N.	HF16.3.36	Angled base shoe with set screw, fits 5/8" round balusters, 1-1/4" base, cast iron		•	•		•	•				
I.	HF16.3.50	Level base shoe with set screw, fits 5/8" round balusters, 1-5/16" square base, aluminum		•				•				
M.	HF16.3.51	Angled base shoe with set screw, fits 5/8" round balusters, 1-5/16" base, aluminum		•				•				
Adjustable Shoes/Collars have a flexible insert that allows them to be used with either square or round balusters ranging in size from 1/2" to 9/16". Epoxy must be used to permanently secure.												
R.	HF16.3.44	Level base shoe, fits 1/2" - 9/16" square or round balusters, 1-5/16" square base, cast iron		•			•	•			•	•
R.	HF16.3.46	Level base shoe, fits 1/2" - 9/16" square or round balusters, 1-1/2" square base, cast iron		•			•	•			•	•
S.	HF16.3.45	Angled base shoe, fits 1/2" - 9/16" square or round balusters, 1-5/16" base, cast iron		•			•	•			•	•
S.	HF16.3.47	Angled base shoe, fits 1/2" - 9/16" square or round balusters, 1-1/2" base, cast iron		•			•	•			•	•
P.	HF16.3.24	Level base collar, fits 1/2" - 9/16" square or round balusters, 1-11/16" square base, aluminum		•								
Q.	HF16.3.23	Level base collar, fits 1/2" - 9/16" square or round balusters, 1-11/16" round base, aluminum		•								
Newel Mounting Kits												
T.	HF16.2.3	Newel mounting kit with level base shoe, fits 1-3/16" square newels, 3-1/8" square base, cast iron	•	•	•	•	•	•	•	•		
T.	HF16.3.31	Newel mounting kit with level base shoe, fits 1" square newels, 3-1/8" square base, cast iron	•	•			•	•			•	•
U.	HF16.3.14	Newel mounting kit with level base shoe, fits 1-3/16" round newels, 3-1/8" square base, cast iron	•	•	•		•					
U.	HF16.3.33	Newel mounting kit with level base shoe, fits 1" round newels, 3-1/8" square base, cast iron	•	•	•		•				•	•
V.	HF17.2.3	Newel mounting kit with level base collar, fits 1-3/16" round stainless steel newels, 3-1/4" round base, stainless steel										
Handrail Brackets												
W.	HR3002	Handrail bracket, 1-1/4" x 2-3/8" mounting plate, extends out 3" from wall, aluminum Also available in Brushed Chrome HFBC.3002, Polished Brass HFPP.3002		•		•	•	•	•			•
X.	HE3003	Handrail bracket, 2-1/16" round mounting plate, extends out 3" from wall, aluminum Also available in Chrome HFCE.3003, Brushed Chrome HFBC.3003, Nickel HFNL.3003		•	•	•	•	•	•	•	•	•

ACCESSORY PROFILES



Forged Panels

**House of Forgings
is dedicated to
providing superior
products that meet the
highest standards of
architects,
homebuilders
and homeowners.**

We are pleased to provide a full line of prefabricated ornamental iron components. These elegant products allow for the look and feel of a fully custom fabricated iron stair or railing system. In addition to cost savings, installation time is greatly reduced compared to traditional fabrication.

STAIR & RAILING PRODUCTS BY





Rebecca panels paired with Monte Carlo balusters (shown)

REBECCA

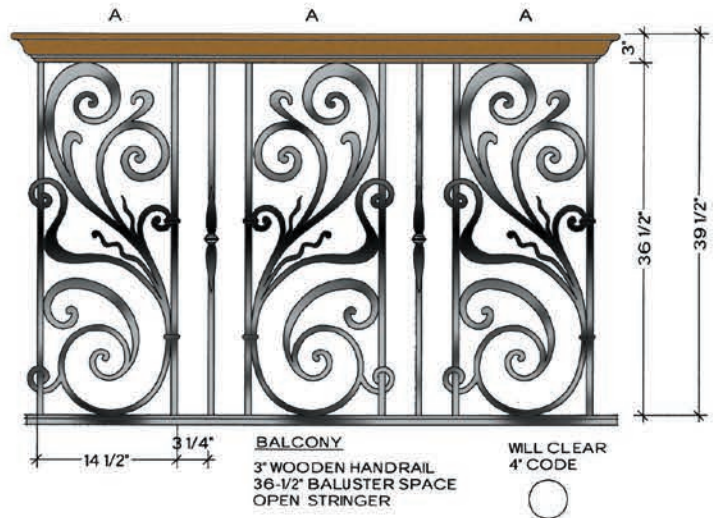
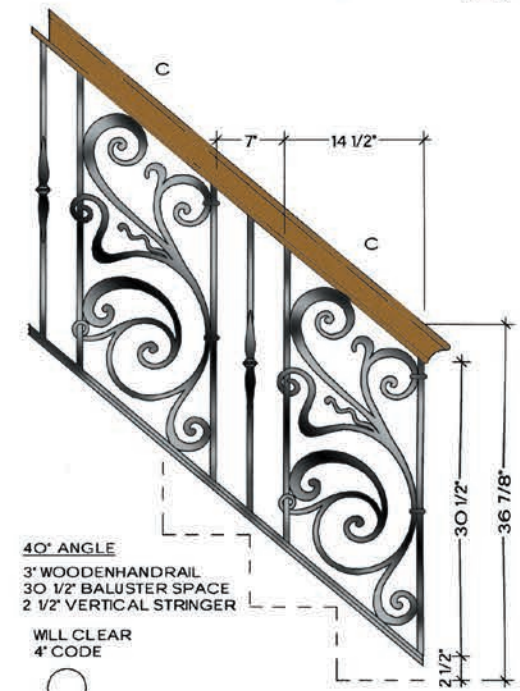
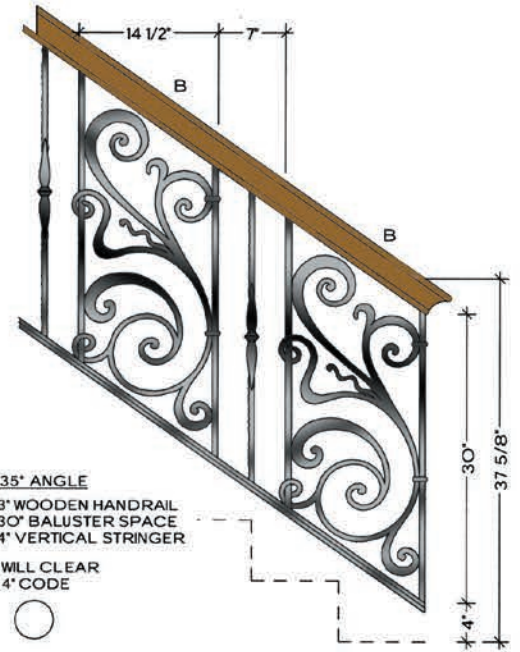


Rebecca HFRB.B1 (shown)

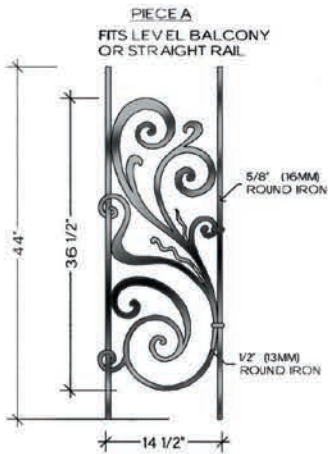
5/8" ROUND IRON



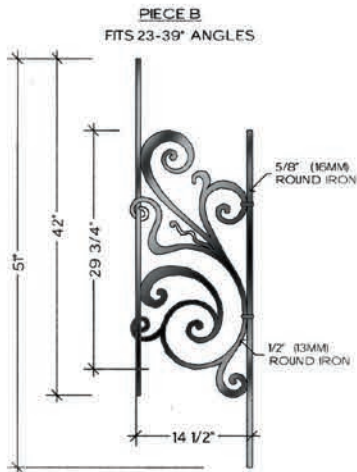
1/2" ROUND IRON



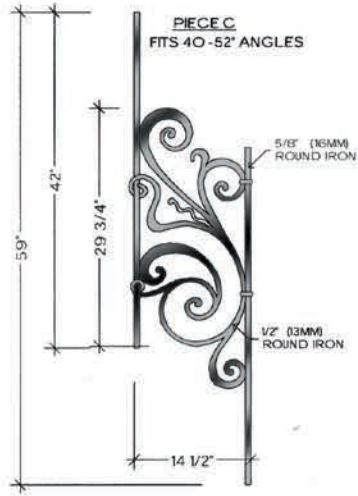
REBECCA



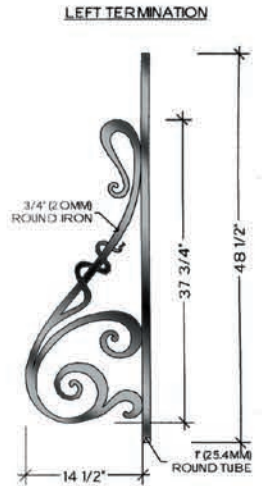
TOP VIEW
A-1
FLAT
HFRB.A1



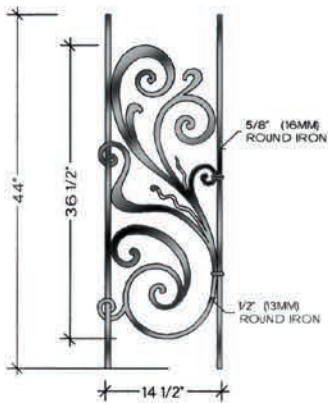
TOP VIEW
B-1
FLAT
HFRB.B1



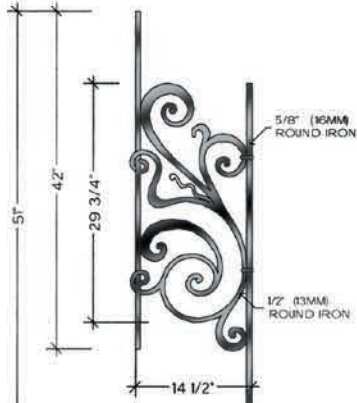
TOP VIEW
C-1
FLAT
HFRB.C1



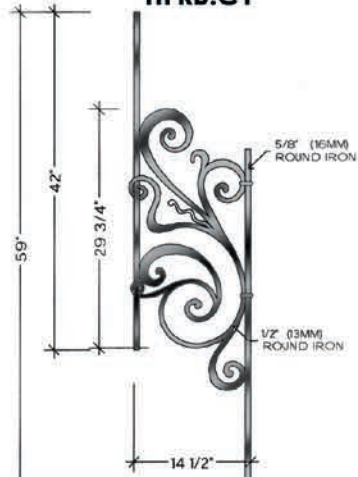
TOP VIEW
4 1/2" RADIUS
HFRB.TERM LF



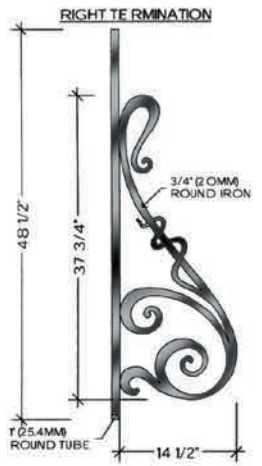
TOP VIEW
A-2
ALL RADIUS FROM 28" TO 20"-O"
HFRB.A2



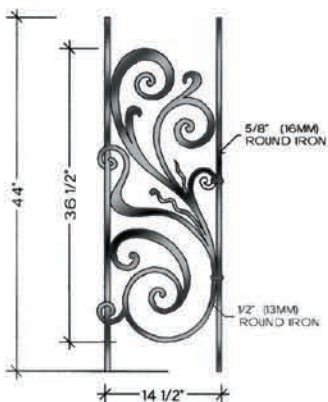
TOP VIEW
B-2
ALL RADIUS FROM 30" TO 20"-O"
HFRB.B2



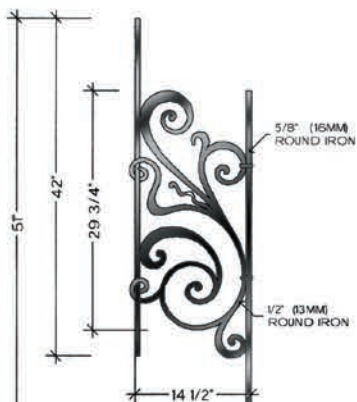
TOP VIEW
C-2
ALL RADIUS FROM 30" TO 20"-O"
HFRB.C2



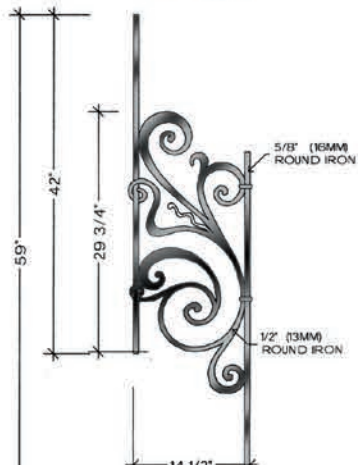
TOP VIEW
4 1/2" RADIUS
HFRB.TERM RT



TOP VIEW
A-3
ALL RADIUS FROM 28" TO 20"-O"
HFRB.A3



TOP VIEW
B-3
ALL RADIUS FROM 30" TO 20"-O"
HFRB.B3



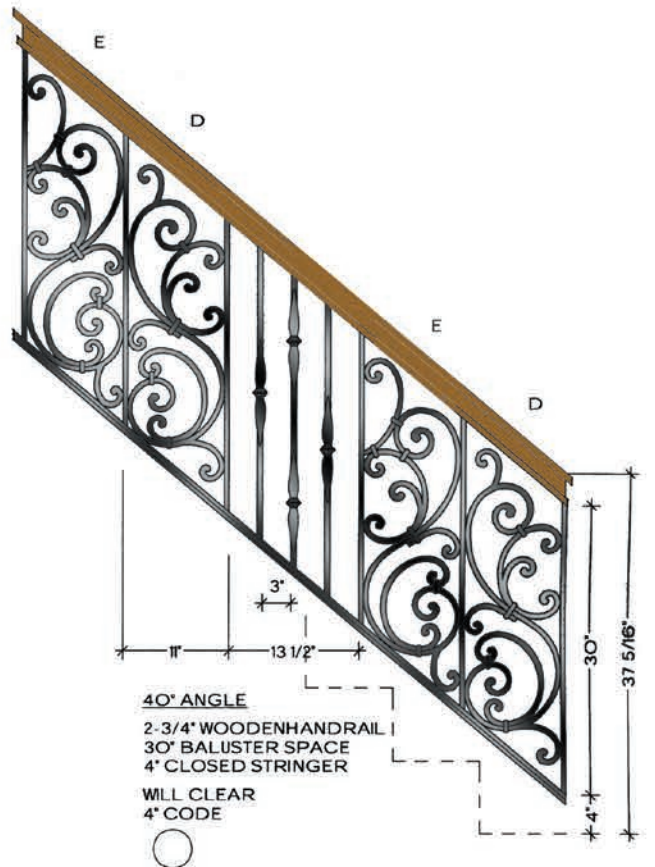
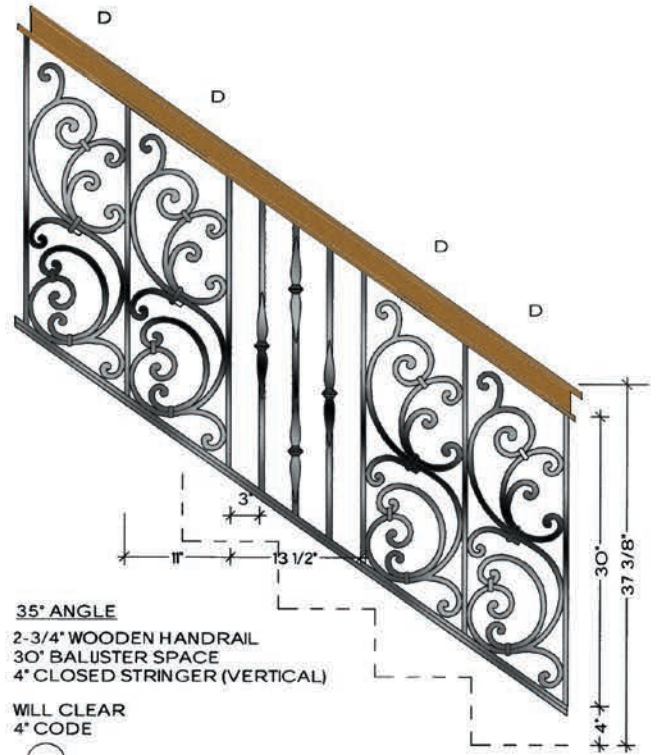
TOP VIEW
C-3
ALL RADIUS FROM 30" TO 20"-O"
HFRB.C3

TUSCANY

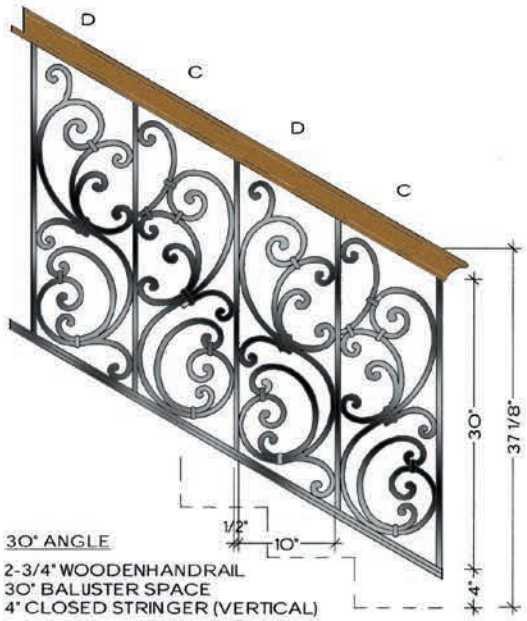


Tuscany HFTU.A1 (shown)

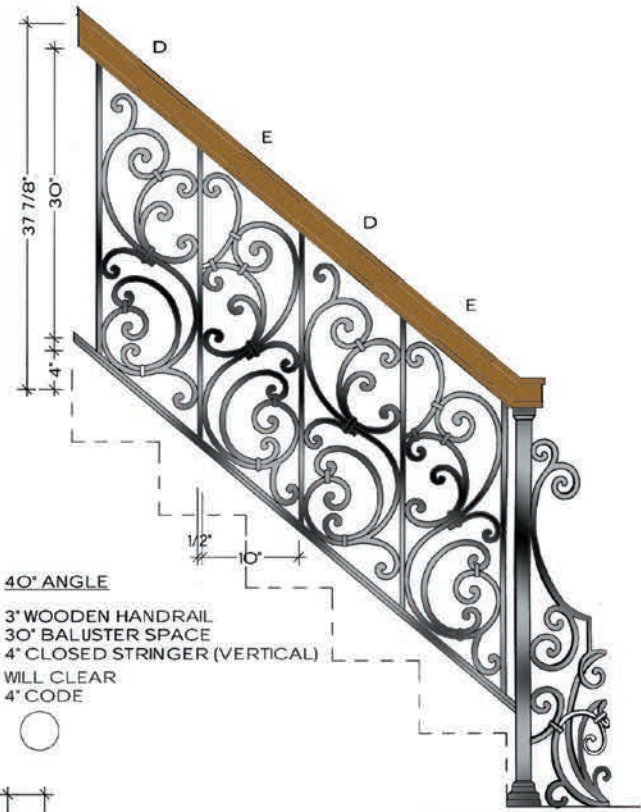
1/2" SQUARE
IRON



TUSCANY



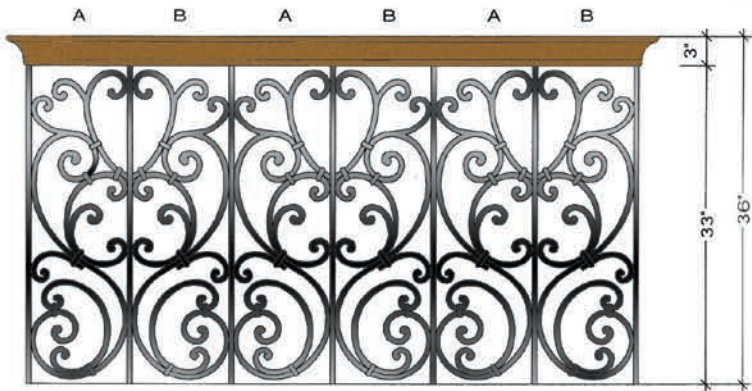
WILL CLEAR
 4" CODE



WILL CLEAR
 4" CODE



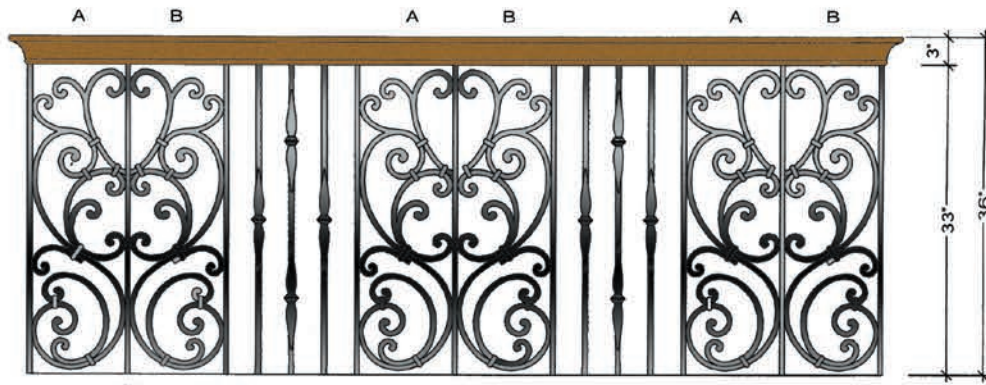
RIGHT TERMINATION
 LEFT SIDE VIEW



1/2" 10"

BALCONY
 3" WOODEN HANDRAIL
 33" BALUSTER SPACE

WILL CLEAR
 4" CODE



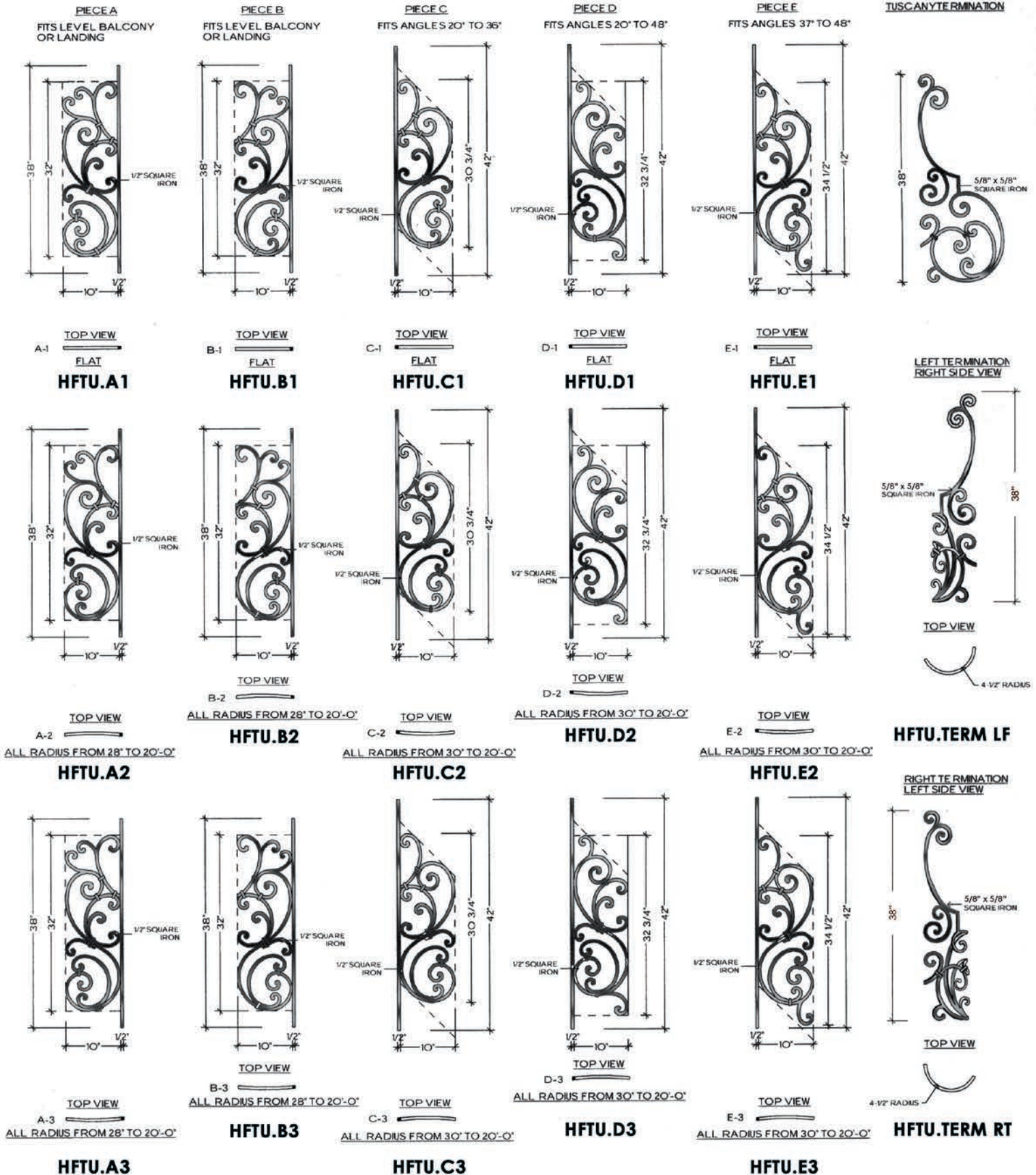
1/2" 10" 1/2" 3" 14 1/2"

BALCONY
 3" WOODEN HANDRAIL
 33" BALUSTER SPACE

WILL CLEAR
 4" CODE



TUSCANY





Tuscany panels paired with Gothic balusters (shown)

SEVILLE

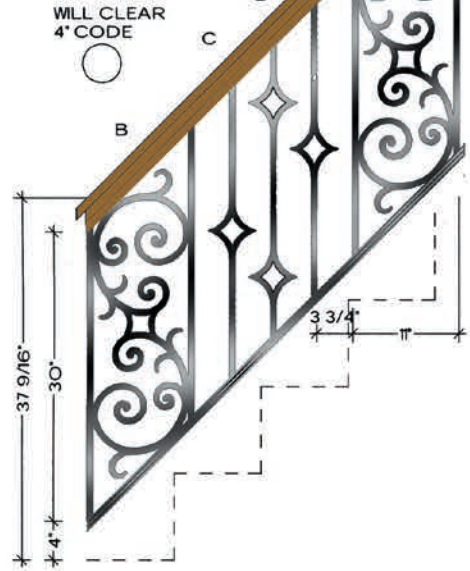


Seville HFSE.A1 (shown)

1/2" SQUARE
IRON

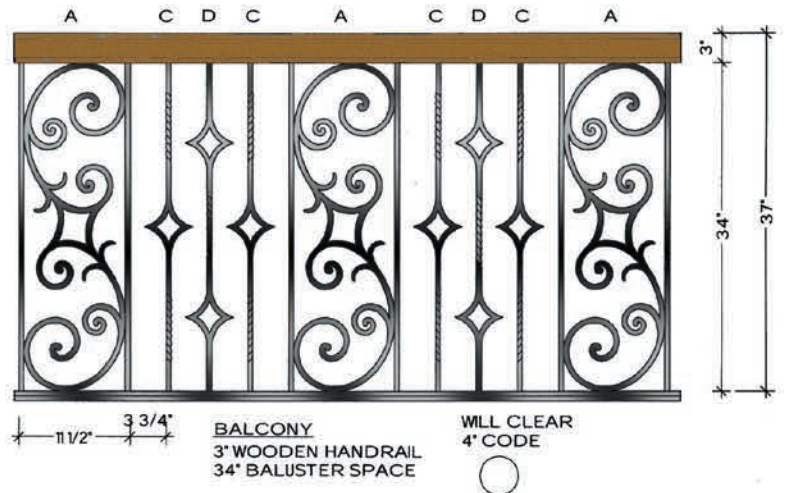
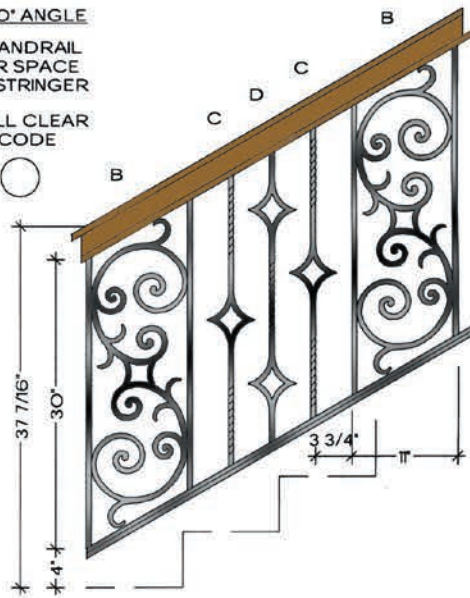


45° ANGLE
2-1/2" WOODEN HANDRAIL
30" BALUSTER SPACE
4" VERTICAL STRINGER

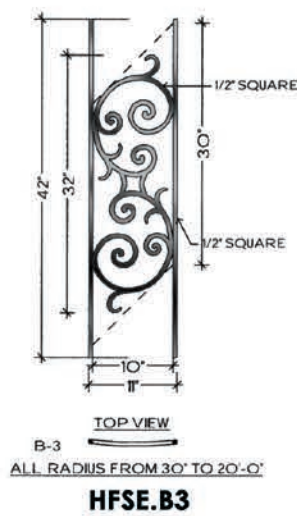
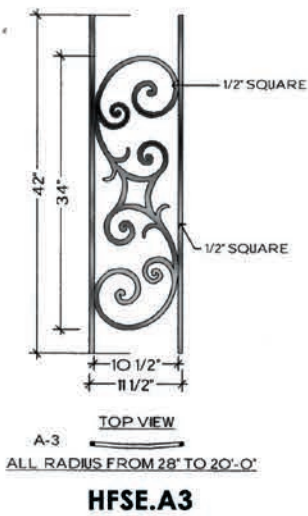
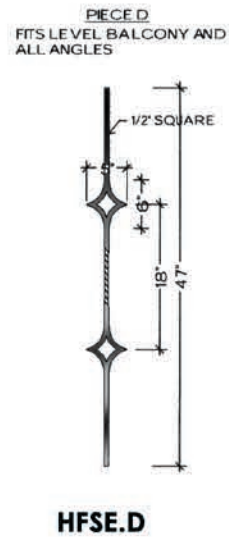
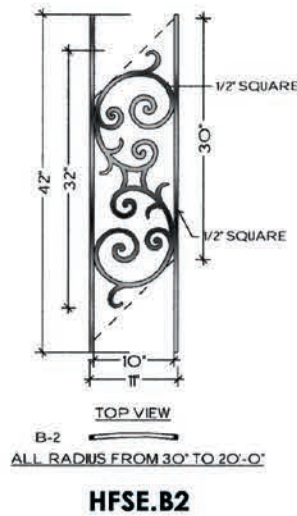
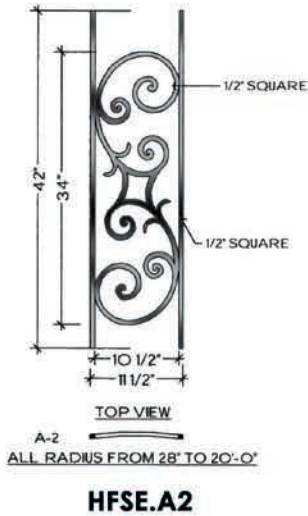
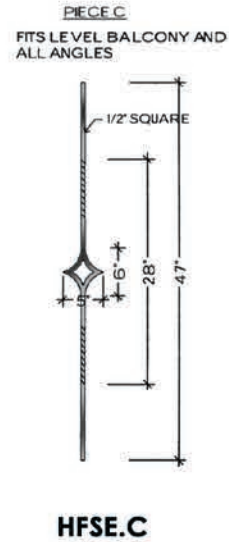
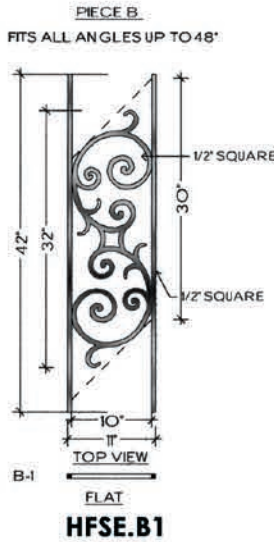
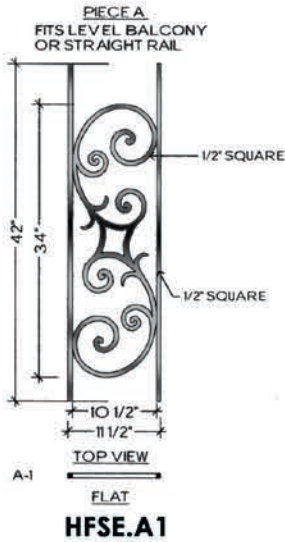


30° ANGLE
3" WOODEN HANDRAIL
30" BALUSTER SPACE
4" VERTICAL STRINGER

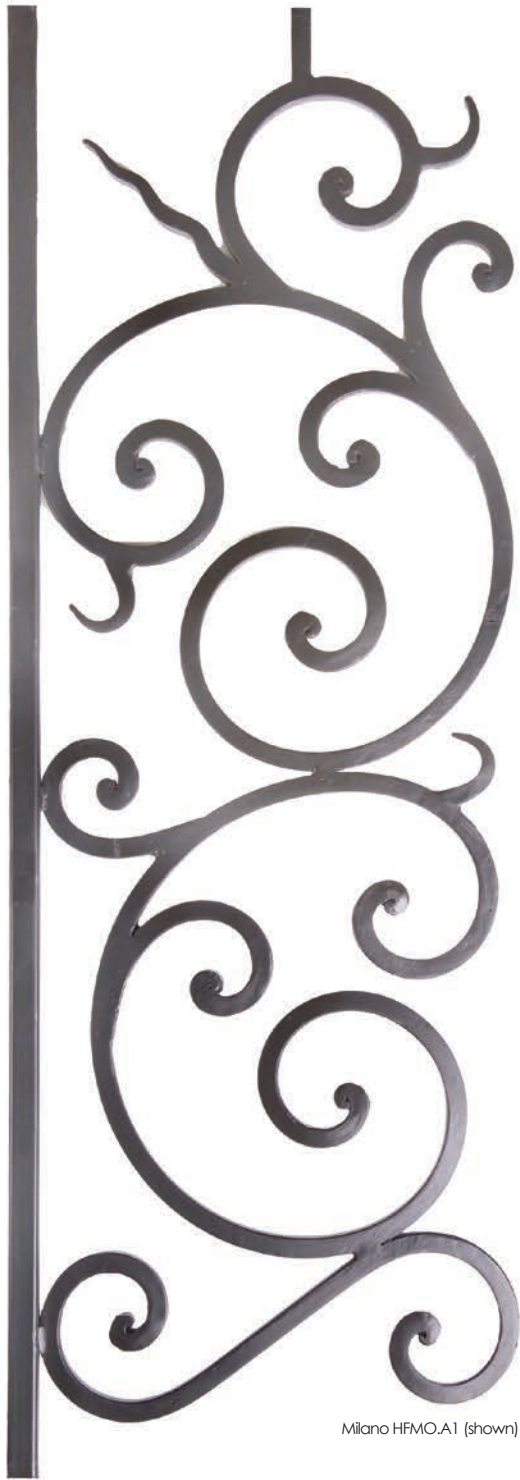
WILL CLEAR
4" CODE



SEVILLE



MILANO

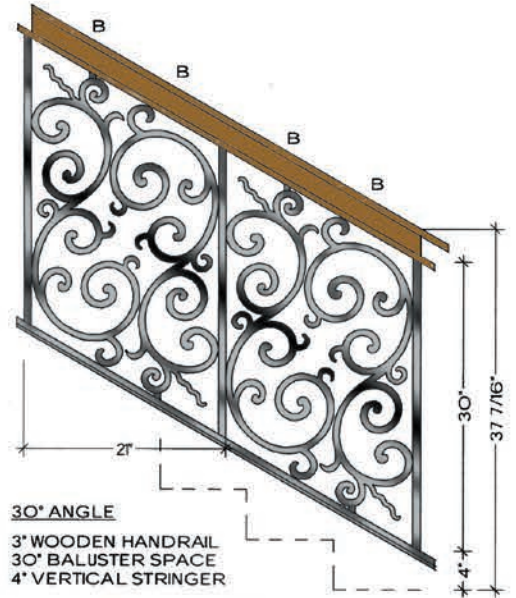


Milano HFMO.A1 (shown)

3/4" SQUARE TUBE

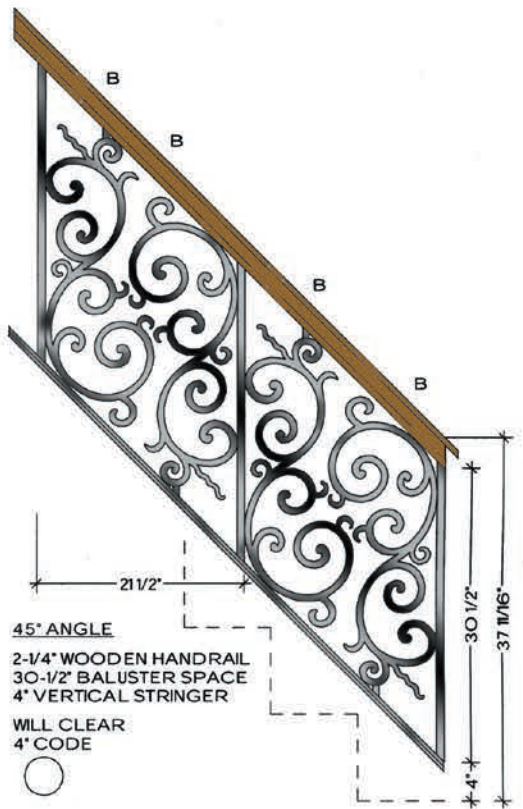


1/2" SQUARE IRON



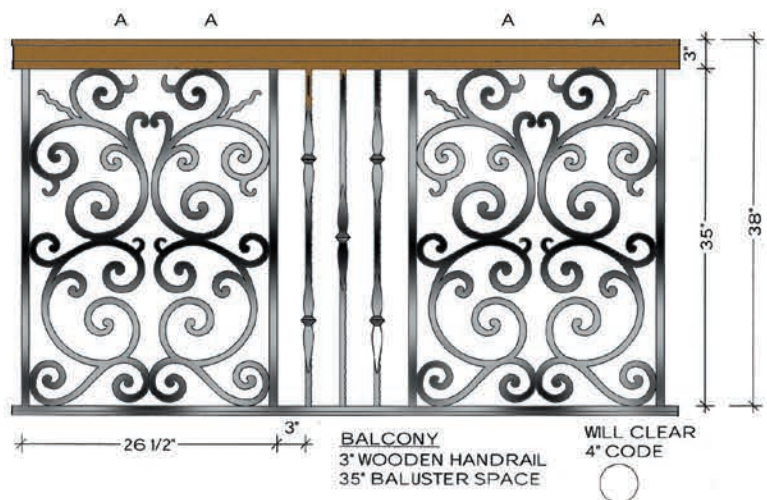
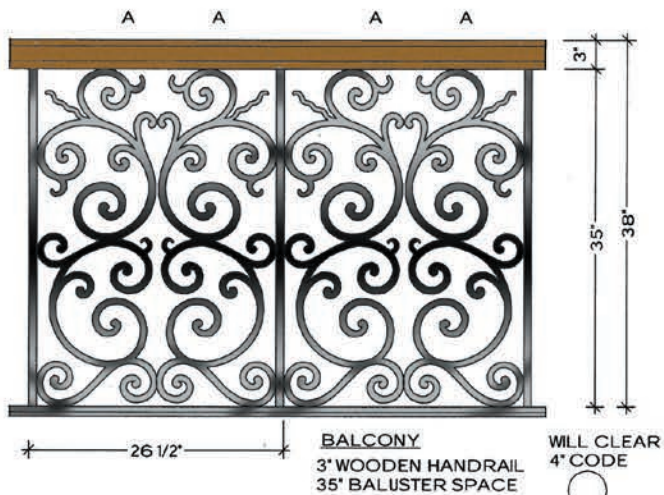
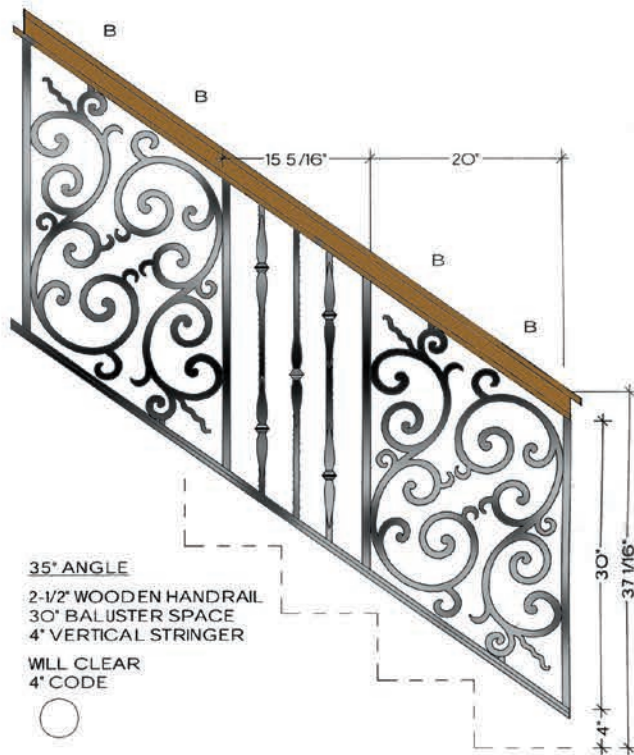
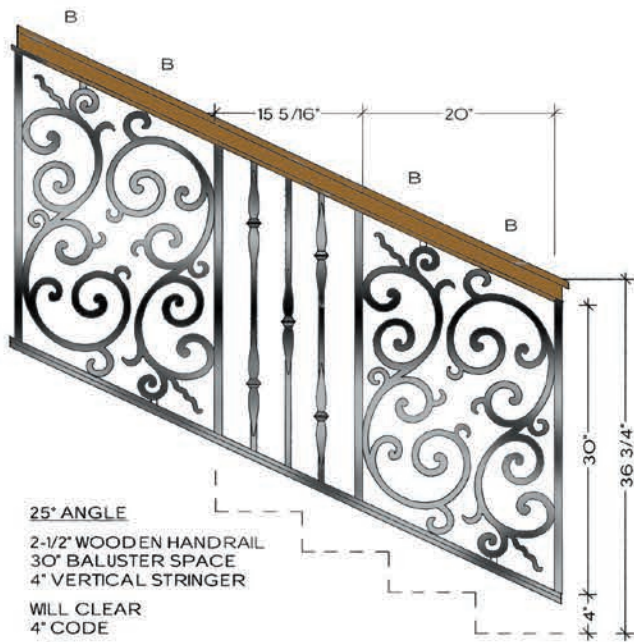
WILL CLEAR 4" CODE

NOTE: THE MILANO LAYOUT REQUIRES THE REMOVAL OF SOME ATTACHED VERTICALS AND REWELDING SCROLLS TO PREVIOUS VERTICAL



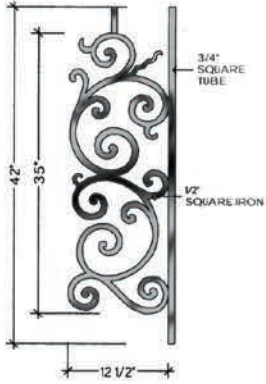
WILL CLEAR 4" CODE

MILANO



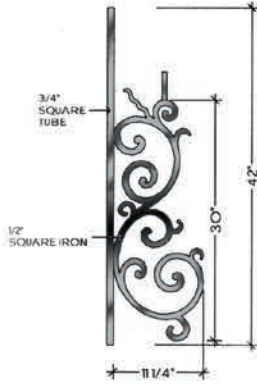
MILANO

PIECE A
FITS LEVEL BALCONY OR LANDING



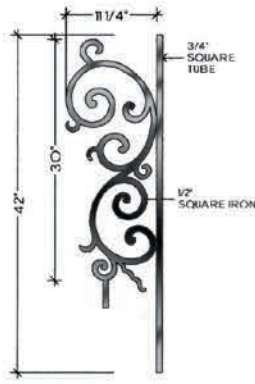
TOP VIEW
A-1
FLAT
HFM0.A1

PIECE B
FITS ALL ANGLES UP TO 48°



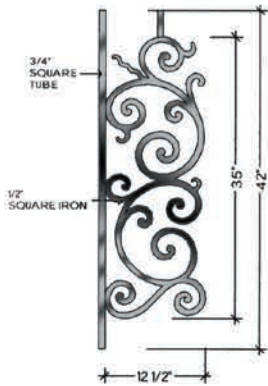
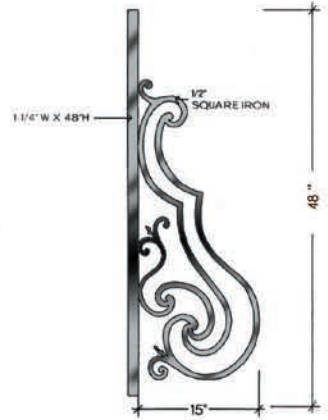
TOP VIEW
B-1
FLAT
HFM0.B1

PIECE B
FITS ALL ANGLES UP TO 48°

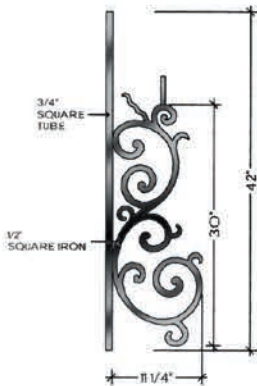


TOP VIEW
B-1
FLAT
HFM0.B1

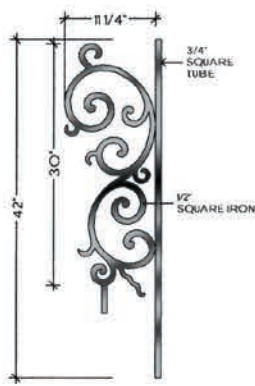
TERMINATION



TOP VIEW
A-2
ALL RADIUS FROM 28" TO 20'-0"
HFM0.A2



TOP VIEW
B-2
ALL RADIUS FROM 30" TO 20'-0"
HFM0.B2



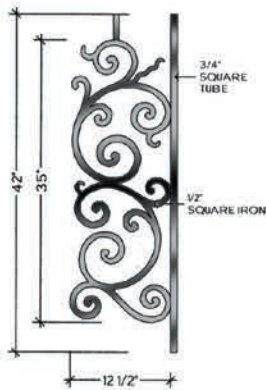
TOP VIEW
B-2
ALL RADIUS FROM 30" TO 20'-0"
HFM0.B2

LEFT TERMINATION
RIGHT SIDE VIEW

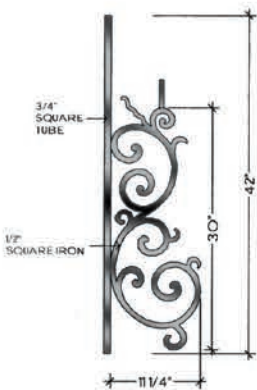


HFM0.TERM LF

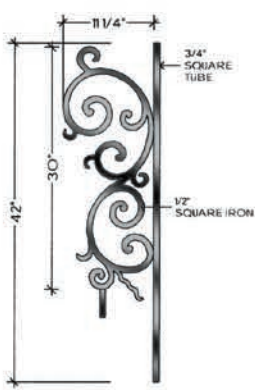
RIGHT TERMINATION
LEFT SIDE VIEW



TOP VIEW
A-3
ALL RADIUS FROM 28" TO 20'-0"
HFM0.A3



TOP VIEW
B-3
ALL RADIUS FROM 30" TO 20'-0"
HFM0.B3



TOP VIEW
B-3
ALL RADIUS FROM 30" TO 20'-0"
HFM0.B3



HFM0.TERM RT



BORDEAUX

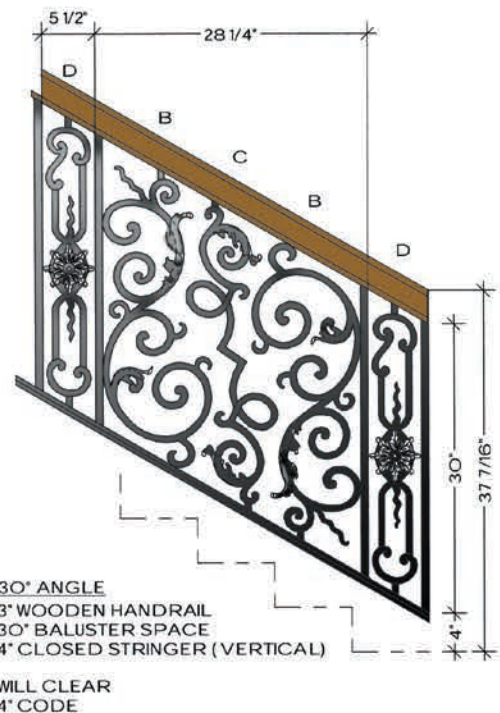
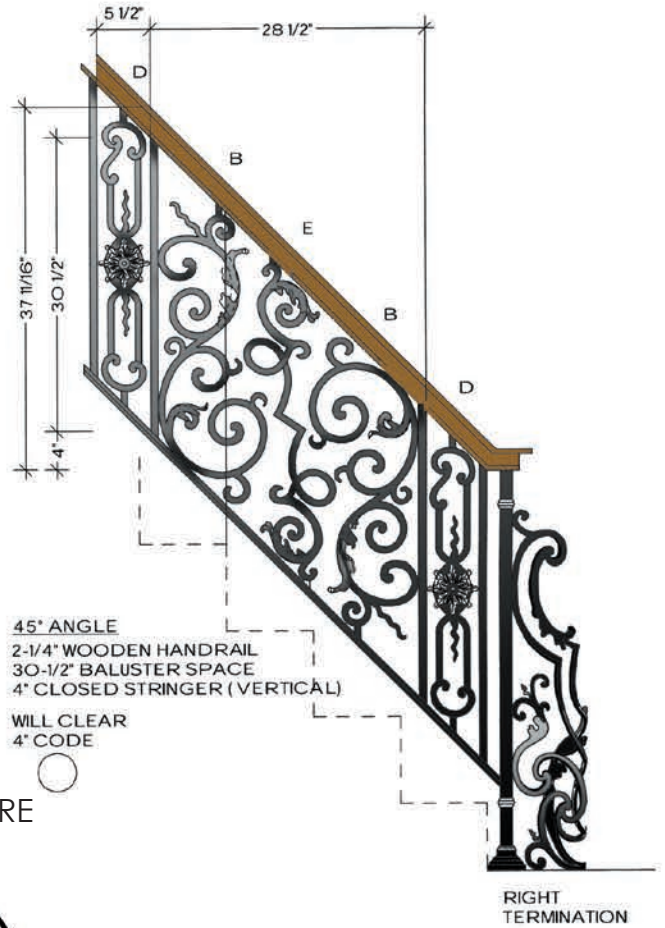


Bordeaux HFBX.A1 (shown)

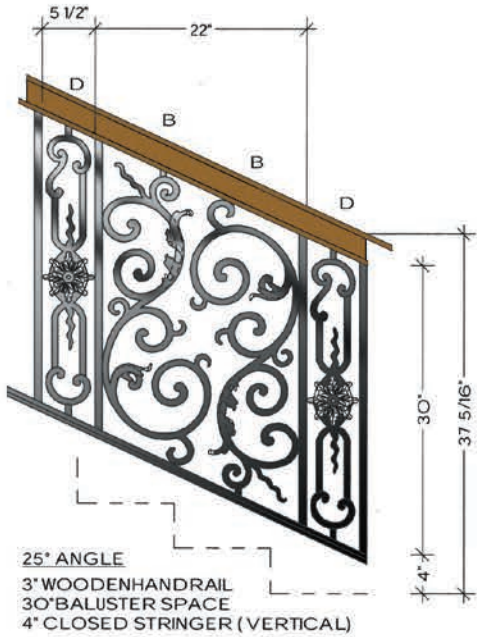
3/4" SQUARE
TUBE



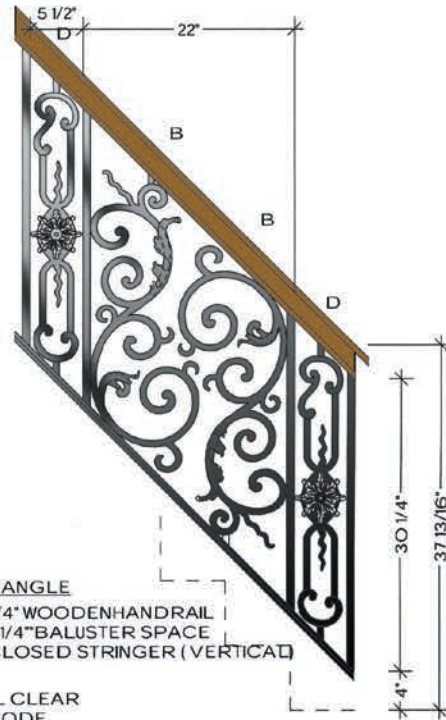
5/8" SQUARE
IRON



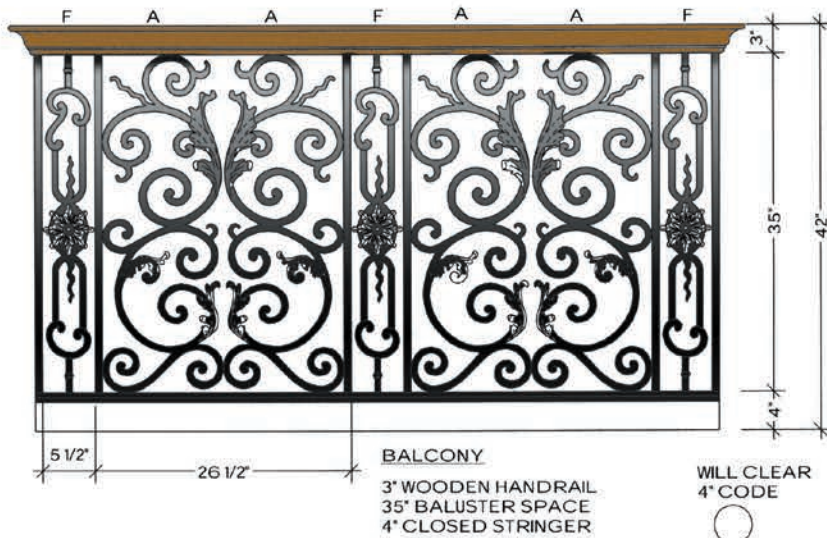
BORDEAUX



WILL CLEAR
 4" CODE



WILL CLEAR
 4" CODE

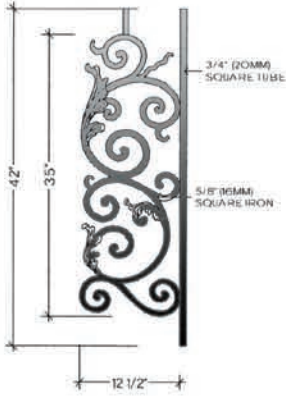


WILL CLEAR
 4" CODE



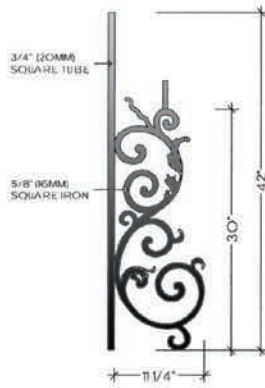
BORDEAUX

PIECE A
FITS LEVEL BALCONY OR STRAIGHT RAILS



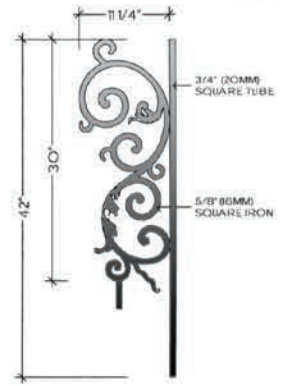
TOP VIEW
A-1
FLAT
HFBX.A1

PIECE B
FITS ALL ANGLES UP TO 48°

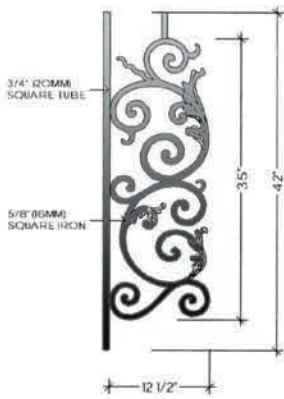


TOP VIEW
B-1
FLAT
HFBX.B1

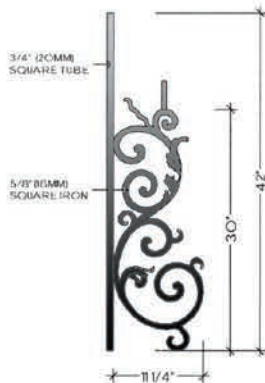
PIECE B
FITS ALL ANGLES UP TO 48°



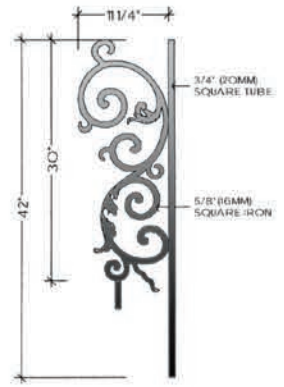
TOP VIEW
B-1
FLAT
HFBX.B1



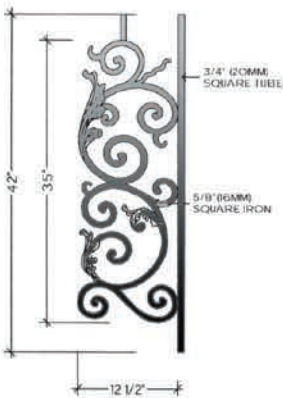
TOP VIEW
A-2
ALL RADIUS FROM 28" TO 20'-0"
HFBX.A2



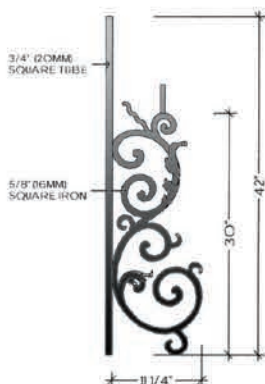
TOP VIEW
B-2
ALL RADIUS FROM 30" TO 20'-0"
HFBX.B2



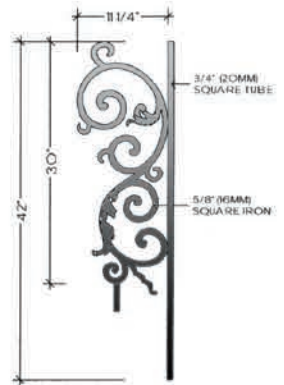
TOP VIEW
B-2
ALL RADIUS FROM 30" TO 20'-0"
HFBX.B2



TOP VIEW
A-3
ALL RADIUS FROM 28" TO 20'-0"
HFBX.A3



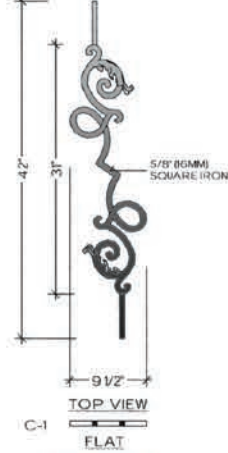
TOP VIEW
B-3
ALL RADIUS FROM 30" TO 20'-0"
HFBX.B3



TOP VIEW
B-3
ALL RADIUS FROM 30" TO 20'-0"
HFBX.B3

BORDEAUX

PIECE C
FITS ONLY INCLINE ANGLES BELOW 40°



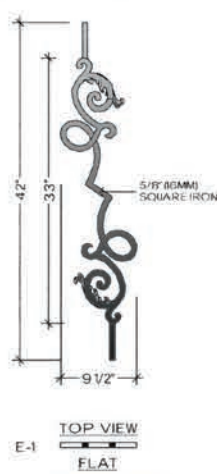
HFBX.C1

PIECE D
FITS ALL ANGLES



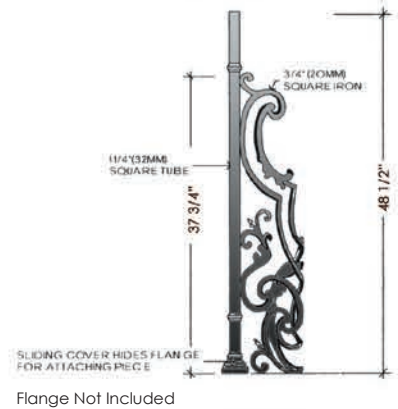
HFBX.D

PIECE E
FITS ONLY ANGLES ABOVE 40°



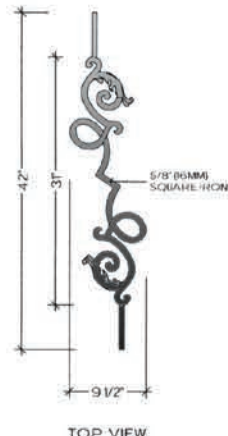
HFBX.E1

RIGHT TERMINATION
INSIDE VIEW



TOP VIEW

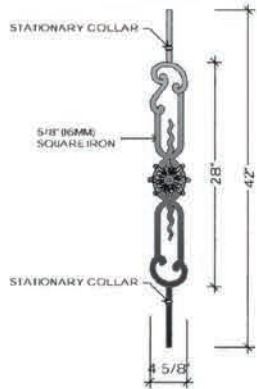
HFBX.TERM RT



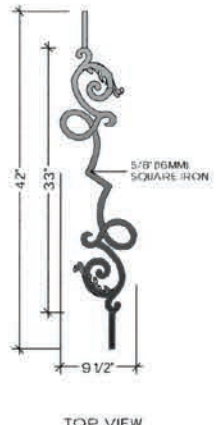
HFBX.C2

ALL RADIUS FROM 30° TO 20° 0'

PIECE F
FITS LEVEL BALCONY OR STRAIGHT RAIL



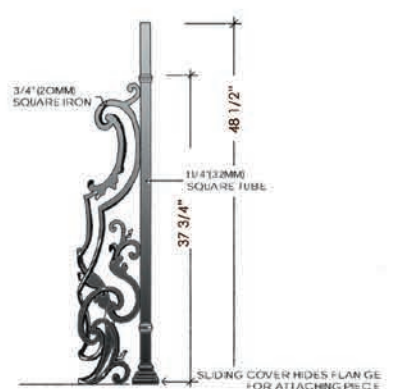
HFBX.F



HFBX.E2

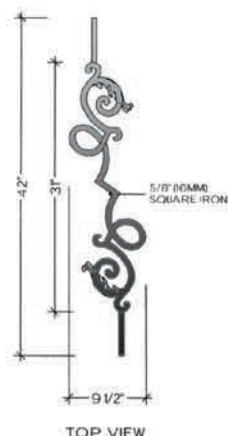
ALL RADIUS FROM 30° TO 20° 0'

LEFT TERMINATION
INSIDE VIEW



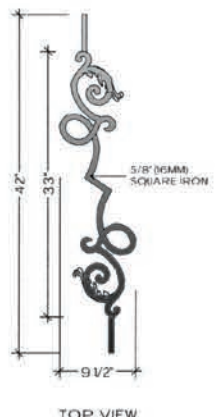
TOP VIEW

HFBX.TERM LF



HFBX.C3

ALL RADIUS FROM 30° TO 20° 0'



HFBX.E3

ALL RADIUS FROM 30° TO 20° 0'

REGENCY



Regency HFREA1 (shown)

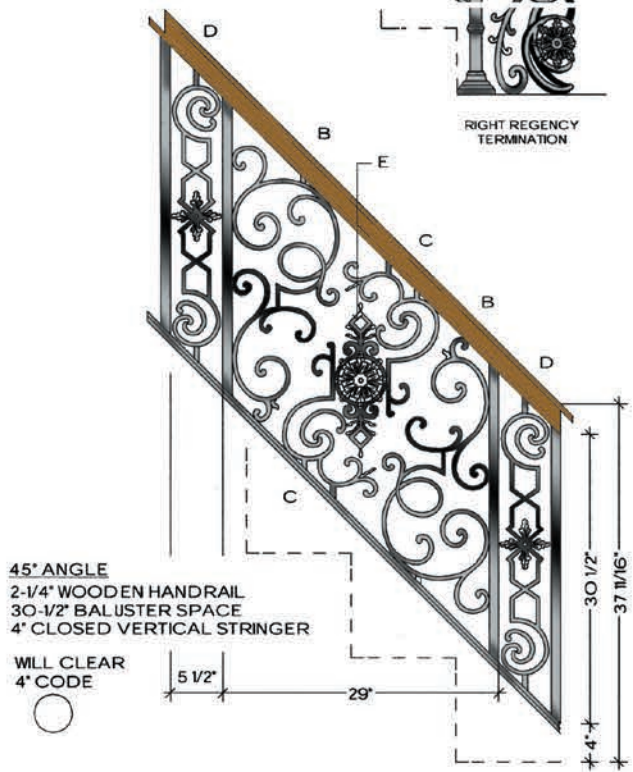
1" SQUARE TUBE



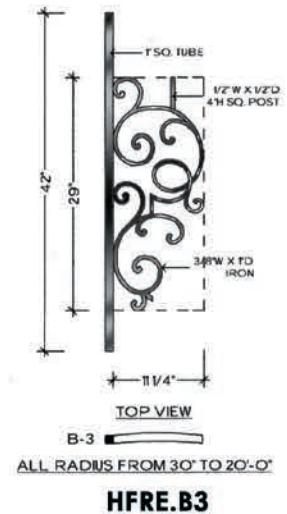
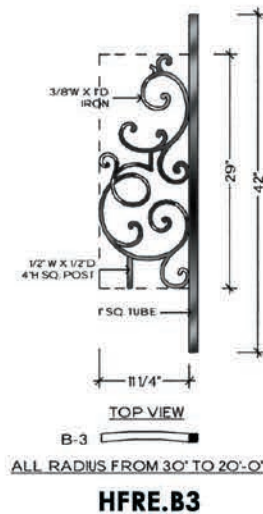
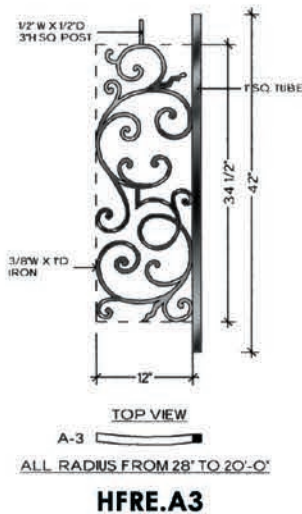
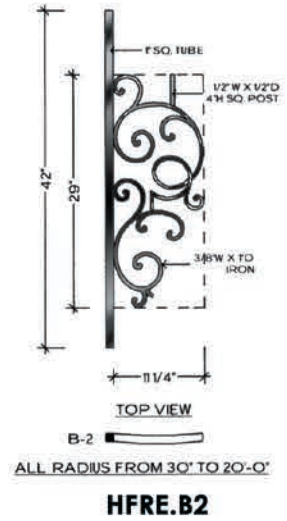
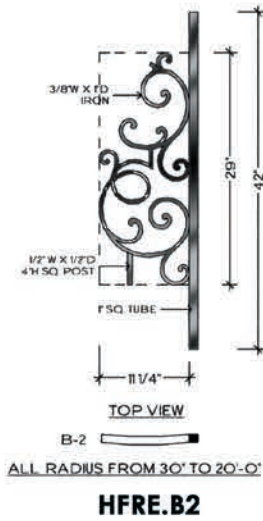
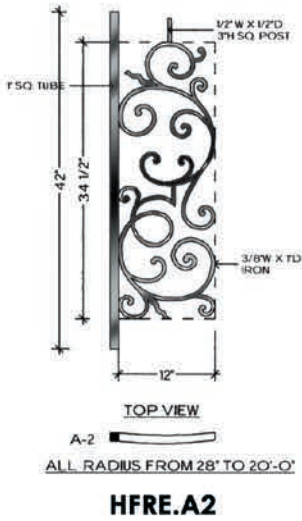
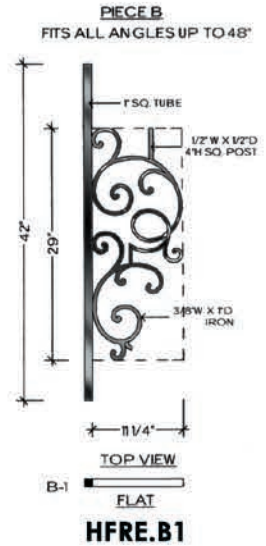
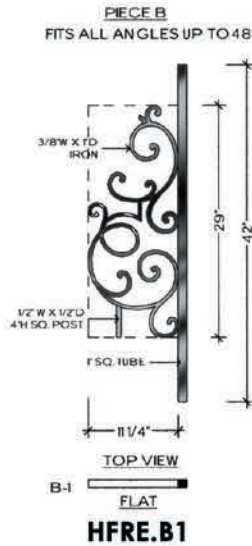
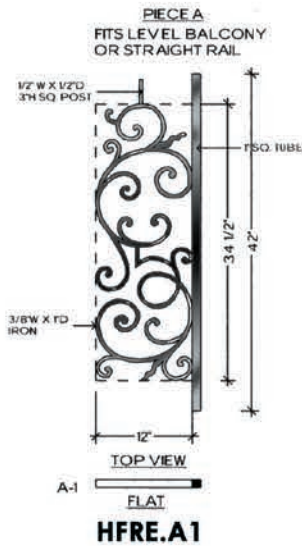
3/8" X 1" FLAT IRON



RIGHT REGENCY TERMINATION

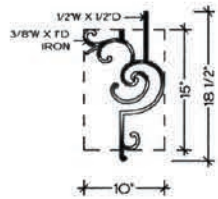


REGENCY



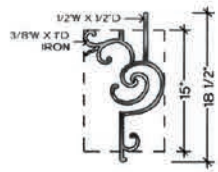
REGENCY

PIECE C
FITS ALL ANGLES UP TO 48°



TOP VIEW
C-1
FLAT

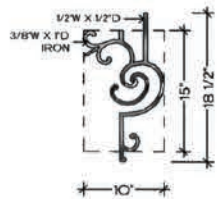
HFRE.C1



TOP VIEW
C-2

ALL RADIUS FROM 30" TO 20'-0"

HFRE.C2



TOP VIEW
C-3

ALL RADIUS FROM 30" TO 20'-0"

HFRE.C3

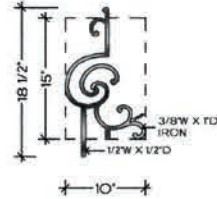
PIECE D
FITS ALL ANGLES &
LEVEL BALCONY



TOP VIEW
FLAT

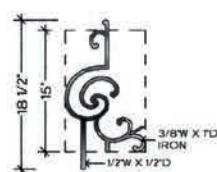
HFRE.D

PIECE C
FITS ALL ANGLES UP TO 48°



TOP VIEW
C-1
FLAT

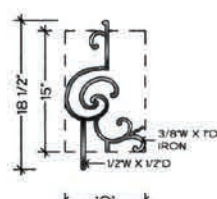
HFRE.C1



TOP VIEW
C-2

ALL RADIUS FROM 30" TO 20'-0"

HFRE.C2

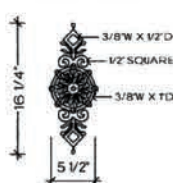


TOP VIEW
C-3

ALL RADIUS FROM 30" TO 20'-0"

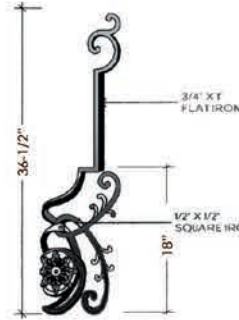
HFRE.C3

PIECE E
FITS ALL ANGLES



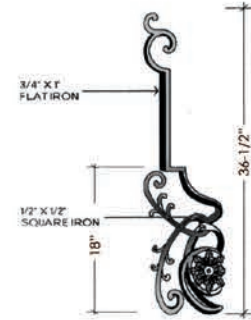
HFRE.E

LEFT SIDE TERMINATION
RIGHT SIDE VIEW

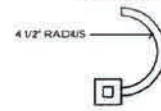
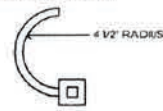


HFRE.TERM LF

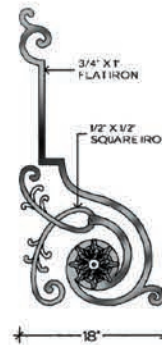
RIGHT SIDE TERMINATION
LEFT SIDE VIEW



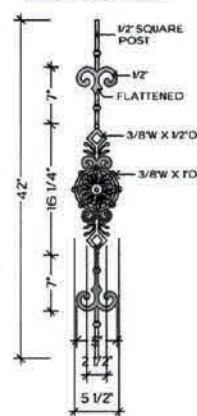
HFRE.TERM RT



TERMINATION



PIECE F
FITS LEVEL BALCONY
OR STRAIGHT RAIL



TOP VIEW
FLAT

HFRE.F



U.S. Pat.
No. 5,820,111
No. 6,059,269

Regency panels (shown)

Regency[©]
71

Wood Products

At House of Forgings we provide much more than just forged iron products, we boast an extensive line of wood components as well.

From handrails to treads, we carry virtually all components necessary to create the staircase or balcony you have envisioned. All products are stocked in Red Oak or Paint Grade, ready for immediate shipping. Components are packaged and shipped with the utmost integrity ensuring that your order will arrive on time and undamaged.

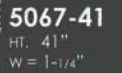
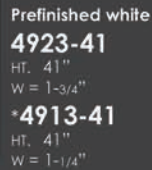
STAIR & RAILING PRODUCTS BY





Elegante-Column newels (RO-4480/RO-4485) paired with Twist/Scroll balusters (shown)

BLANKS



* SPECIAL ORDER IN RED OAK

CLASSIC



CLASSIC



* SPECIAL ORDER



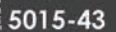
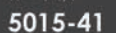
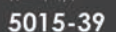
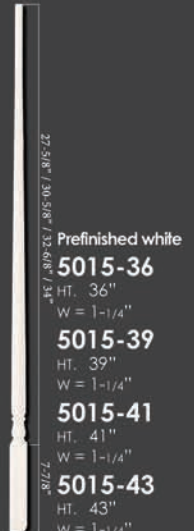
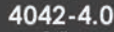
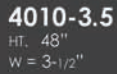
* SPECIAL ORDER

All newels stocked in Red Oak (RO), all balusters stocked in prefinished white (PG)

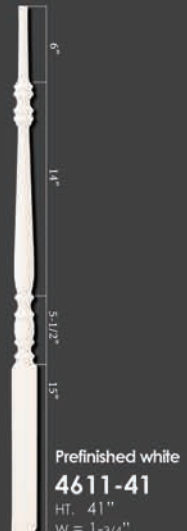
REMINGTON



MAGNOLIA



CONCORD



ELEGANTE-COLUMN



4480
HT. 56"
W = 5-1/2"



4485-5
HT. 56"
W = 3-1/4"



4485
HT. 48"
W = 3-1/4"

ELEGANTE-TWIST



4440
HT. 56"
W = 5-1/2"



4450-5
HT. 56"
W = 3-1/4"



4450
HT. 48"
W = 3-1/4"

All Elegante newels and balusters stocked in Red Oak (RO)

BOX NEWELS



Contemporary
Box Newel
4191
HT. 56"
W = 3-1/4"
SOLID



Contemporary
Stabilizer Newel
4191-SP
HT. 43"
W = 3"
SOLID



Plain Box
Newel
961-56
HT. 56"
W = 4-1/2"
SOLID



Recessed Panel
Box Newel
4291
HT. 56"
W = 6"
HOLLOW



All box newels come with both square and pyramid tops

BOX NEWELS



Adjustable
Box Newel
4592
HT. 56"
W = 5"
SOLID
Plain Box
Newel
4691
HT. 56"
W = 6-1/4"
HOLLOW



Plain Newel
4592-PLAIN
HT. 56"
W = 3-1/2"
SOLID



Stabilizer Newel
4592-SP
HT. 43"
W = 3"
SOLID



Raised Panel
Box Newel
4791
HT. 56"
W = 6-1/4"
HOLLOW



Fluted Box
Newel
4891
HT. 56"
W = 6-1/4"
HOLLOW



Recessed Panel
Box Newel
4991
HT. 56"
W = 6-1/4"
HOLLOW

All box newels stocked in Red Oak (RO)



Elegante-Column newels (RO-4480/RO-4485) paired with Tuscan balusters, Special wedge shaped double end starting step (shown)

HANDRAIL & FITTINGS

6040



6040
Round Wall Rail
Diameter: 1-5/8"

RETURNED END



-  7009
-  7209
-  7709

6010



Colonial Hand Rail
HT. 2-3/8"
W. 2-1/4"

6010 Straight Rail
6010-B Bending Rail
bending rail includes moulding

OPENING CAP



-  7019
-  7219
-  7719

6210



Traditional Hand Rail
HT. 2-3/8"
W. 2-5/8"

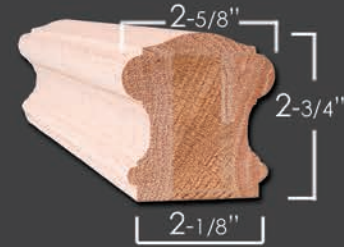
6210 Straight Rail
6210-B Bending Rail
bending rail includes moulding

TANDEM CAP



-  7020
-  7220
-  7720

6710



Prestige Hand Rail
HT. 2-3/4"
W. 2-5/8"

6710 Straight Rail
6713 Bending Rail
bending rail includes moulding

OVER EASING



-  7013
-  7213
-  7713

6002



Modern Hand Rail
HT. 1-5/8"
W. 2-3/4"

6002 Straight Rail
Available in 8' & 16'
no fittings available

UP EASING 90 DEGREE



-  7012
-  7212
-  7712
-  7014
-  7214
-  7714

6084



Modern Hand Rail
HT. 1-3/4"
W. 2-5/8"

6084 Straight Rail
Available in 8' & 16'
no fittings available

START EASING WITH CAP



-  7010
-  7210
-  7710

All handrail and fittings stocked in Red Oak (RO)

LEVEL QUARTER TURN



	7011
	7211
	7711

LEVEL QUARTER TURN WITH CAP



	7021
	7221
	7721

LEFT & RIGHT HAND S-TURNS



	7022-L
	7222-L
	7022-R
	7222-R

LEFT & RIGHT HAND TURNOUTS



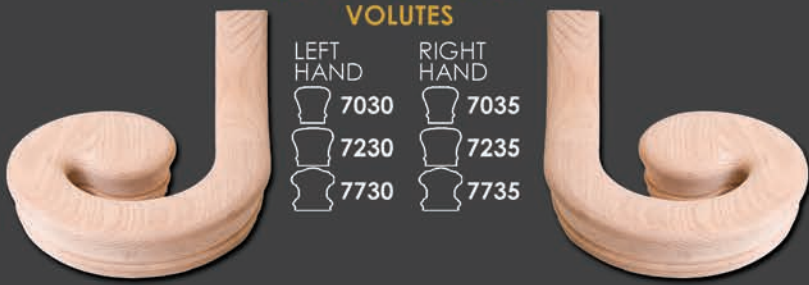
	7040
	7240
	7740
	7045
	7245
	7745







2 RISE STRAIGHT GOOSENECK



	7099
	7299
	7799

LEFT & RIGHT HAND VOLUTES



	7030
	7230
	7730
	7035
	7235
	7735

2 RISE STRAIGHT GOOSENECK WITH CAP



	7088-2
	7288-2
	7788-2

2 RISE LEFT & RIGHT HAND GOOSENECK



	7071
	7271
	7771
	7076
	7276
	7776

2 RISE LEFT & RIGHT HAND GOOSENECK WITH CAP



	7081
	7281
	7781
	7086
	7286
	7786

All handrail and fillings stocked in Red Oak (RO)

TREADS / STEPS / LUMBER / PLY

TREADS

RO-8070

Red Oak Bull Nose Tread
1-1/16" x 11-1/2" x 42, 48, 54,
60, 72, 84, 96"



CLASSIC TREADS

RO-8070-13 x

Red Oak Tread
1-1/16" x 13" x 48, 60, 72, 96"

RO-8070-18 x

Red Oak Tread
1-1/16" x 18" x 48, 60, 72, 84"

RO-8070-20 x 60

Red Oak Tread
1-1/16" x 20" x 60"

RO-8070-20 x 72

Red Oak Tread
1-1/16" x 20" x 72"

RO-8070-24 x

Red Oak Tread
1-1/16" x 24" x 60", 72", 84", 96", 120"

RO-8070-48 x 48

Red Oak Tread
1-1/16" x 48" x 48"

RO-8070-60 x 60

Red Oak Tread
1-1/16" x 60" x 60"

RO-8070-48-MR

1-1/16" x 11-1/2" x 48"

RO-8070-54-MR

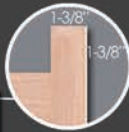
1-1/16" x 11-1/2" x 54"

RO-8070-60-MR

1-1/16" x 11-1/2" x 60"

Mitered Return(MR)(Reversible)

Overall length does not include mitered return



REMODEL TREAD WITH RISER

TREAD Red Oak Bull Nose Tread with Cove
1 1/16" x 10-1/2" x 42, 54, 60"

RISER Red Oak Riser
5/8" x 7-1/2" x 42, 54, 60"

RETRO-42 / RETRO-54 / RETRO-60



REMODEL RETURN TREAD WITH RISER

TREAD Red Oak Bull Nose Tread with Cove
1 1/16" x 10-1/2" x 48, 54, 60"

RISER Red Oak Riser
5/8" x 7-1/2" x 48, 54, 60"

RETRO-48MR / RETRO-54MR / RETRO-60MR



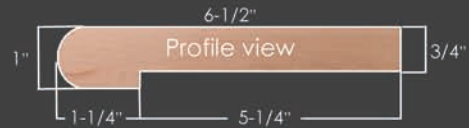
BULL NOSED LANDING TREAD

8090-6

RED OAK

8090-6B

RED OAK BENDING(26 pieces)



TONGUE & GROOVED BULL NOSED LANDING TREAD

8090-6-G

RED OAK(grooved)

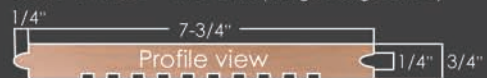
6-1/2"



TONGUE & GROOVED LUMBER

8095-8-T&G

RED OAK (tongue & grooved)



8095-12-T&G

RED OAK (tongue & grooved)



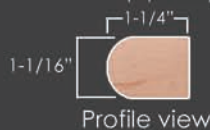
1" BULL NOSING

8080

RED OAK

8080-B

RED OAK BENDING
(5 pieces)





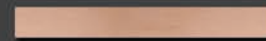
DOUBLE END STARTING STEP

Diameter: 13-3/4"
8015-48 (48" throat) (72" overall)
8015-54 (54" throat) (78" overall)
8015-60 (60" throat) (84" overall)
 Red Oak(RO)

Comes with:
 1" Thick Tread,
 6-3/4" Tall Riser
 Cove & Quarter Round Moulding

STARTER STEP VENEER

Width: 8"
 Length: 120"
RO-VENEER (Red Oak)



SINGLE END STARTING STEP

Diameter: 13-3/4"
8010-48 (48" throat) (60" overall)
8010-60 (60" throat) (72" overall)
8010-72 (72" throat) (84" overall)
 Red Oak(RO)

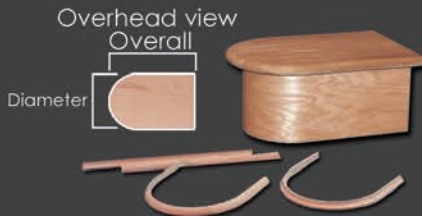
Comes with:
 1" Thick Tread,
 6-3/4" Tall Riser
 Cove & Quarter Round Moulding



SPECIAL WEDGE SHAPED DOUBLE END STARTING STEP

Diameter: 12-3/4" (small end)
 Diameter: 18-1/2" (large end)
RO-8915-48 (48" throat) (73-1/2" overall)
RO-8915-54 (54" throat) (79-1/2" overall)
 (Reversible)
 Red Oak(RO)

Comes with:
 1" Thick Tread,
 6-3/4" Tall Riser
 Cove & Quarter Round Moulding



FALSE END STARTING STEP

Diameter: 13-3/4" Diameter: 17-1/2"
 Length: 17-5/8" overall Length: 21-3/4" overall
8011 **8012**
 Red Oak(RO)

Comes with:
 1" Thick Tread,
 6-3/4" Tall Riser
 Cove & Quarter Round Moulding

PLYWOOD

PLY-1/4-MDF	MDF 1/4" x 4' x 8'	Half Sheet 1/4" x 2' x 8'
PLY-3/4-MDF	MDF 3/4" x 4' x 8'	
PLY-1/8-RO	Red Oak 1/8" x 4' x 8'	Half Sheet 1/4" x 2' x 8'
PLY-1/4-RO	Red Oak 1/4" x 4' x 8'	Half Sheet 1/4" x 2' x 8'
PLY-1/2-RO	Red Oak 1/2" x 4' x 8'	
PLY-3/4-RO	Red Oak 3/4" x 4' x 8'	
PLY-1/8-Birch	Birch 1/8" x 4' x 8'	
PLY-1/4-Birch	Birch 1/4" x 4' x 8'	Half Sheet 1/4" x 2' x 8'
PLY-1/2-Birch	Birch 1/2" x 4' x 8'	
PLY-3/4-Birch	Birch 3/4" x 4' x 8'	
PLY-3/8-Bending	Red Oak 3/8" x 4' x 8' (bending board)	

LUMBER

RO-06	Red Oak 3/4" x 5-1/2" S4S Lumber
RO-08	Red Oak 3/4" x 7-1/4" S4S Lumber
RO-08-B	Red Oak 3/4" x 7-1/4" Bending(29 pieces)
RO-12	Red Oak 3/4" x 11-1/4" S4S Lumber
MDF-06	MDF 11/16" x 5-1/4"
MDF-08	MDF 11/16" x 7-1/4"
MDF-12	MDF 11/16" x 11-1/4"

WOOD MOULDING & FLEXIBLE TRIM



RO-C8	Red Oak 2-1/2" x 11/16" Colonial Casing
PG-C8	Paint Grade 2-1/2" x 11/16" Colonial Casing
FLEX-C8	Paint Grade 2-1/2" x 11/16" Colonial Casing



PG-CAP MOULD	Paint Grade 1-1/8" x 3/8" Cap Mould
---------------------	-------------------------------------



RO-6007	Red Oak 1-3/4" Filet
PG-6007	Paint Grade 1-3/4" Filet



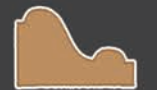
RO-6050	Red Oak 1-1/4" Filet
PG-6050	Paint Grade 1-1/4" Filet



RO-PM-1	Red Oak 11/16" x 1/-1/4" RAB. Panel Mould
PG-PM-1	Paint Grade 11/16" x 1/-1/4" RAB. Panel Mould
Flex-PM-1	Flexible Smooth 11/16" x 1/-1/4" RAB. Panel Mould
Flex-PM-1-WG	Flexible Wood Grain 11/16" x 1/-1/4" RAB. Panel Mould (1/4" Offset)



RO-PM-2	Red Oak 11/16" x 1/-1/4" RAB. Panel Mould
PG-PM-2	Paint Grade 11/16" x 1/-1/4" RAB. Panel Mould
Flex-PM-2	Flexible Smooth 11/16" x 1/-1/4" RAB. Panel Mould
Flex-PM-2-WG	Flexible Wood Grain 11/16" x 1/-1/4" RAB. Panel Mould (3/4" Offset)



RO-PM-5	Red Oak 11/16" x 1-1/8" Flat Panel Mould
PG-PM-5	Paint Grade 11/16" x 1-1/8" Flat Panel Mould
Flex-PM-5	Flexible Smooth 11/16" x 1-1/8" Flat Panel Mould
Flex-PM-5-WG	Flexible Wood Grain 11/16" x 1-1/8" Flat Panel Mould



RO-8050	Red Oak 7/16" x 3/4" Base Shoe Mould
Flex-MS-127	Flexible Smooth 7/16" x 3/4" Base Shoe Mould
Flex-MS-127-WG	Flexible Wood Grain 7/16" x 3/4" Base Shoe Mould



RO-8060	Red Oak 3/4" x 3/4" Cove Mould
PG-8060	Paint Grade 3/4" x 3/4" Cove Mould
Flex-MS-92	Flexible Smooth 3/4" x 3/4" Cove Mould
Flex-MS-92-WG	Flexible Wood Grain 3/4" x 3/4" Cove Mould



RO-8065	Red Oak 1/2" x 1/2" Cove Mould
PG-8065	Paint Grade 1/2" x 1/2" Cove Mould
Flex-MS-101	Flexible Smooth 1/2" x 1/2" Cove Mould
Flex-MS-101-WG	Flexible Wood Grain 1/2" x 1/2" Cove Mould



Flex-LS-105	Flexible Smooth 3/4" x 3/4" Quarter Round Mould
Flex-LS-105-WG	Flexible Wood Grain 3/4" x 3/4" Quarter Round Mould

ACCESSORIES

WALL RAIL BRACKET

1-1/4" x 2-3/8" Mounting Plate
3" Extension From Wall



- HFBC.3002 (BRUSHED CHROME)
- HFCV.3002 (COPPER VEIN)
- HFORB.3002 (OIL RUBBED BRONZE)
- HFORC.3002 (OIL RUBBED COPPER)
- HFPB.3002 (POLISHED BRASS)
- HFSC.3002 (SATIN CLEAR)
- HFSP.3002 (SILVER VEIN)
- HFSTB.3002 (SATIN BLACK)

HANDRAIL BRACKET

2-1/16" Rd. Mounting Plate
3" Extension From Wall



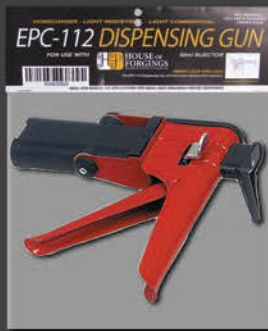
- HFBC.3003 (BRUSHED CHROME)
- HFAN.3003 (ANTIQUE NICKEL)
- HFCE.3003 (CHROME)
- HFNL.3003 (NICKEL)
- HFCV.3003 (COPPER VEIN)
- HFORB.3003 (OIL RUBBED BRONZE)
- HFORC.3003 (OIL RUBBED COPPER)
- HFSC.3003 (SATIN CLEAR)
- HFSP.3003 (SILVER VEIN)
- HFSTB.3003 (SATIN BLACK)
- HFVB.3003 (VINTAGE BRASS)

WOOD GLUE & FILLER



S-9202 (1 Gal.)
S-9203 (32 oz.)
S-9204 (16 oz.)
S-9205 (8 oz.)
FAM-O-WOOD S-9200
RO-9208 (Red Oak)

EPOXY GUN-EPC-112



EPOXY-EPC-410



EPOXY PASTE EPC-7

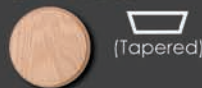


OAK ROSETTES



RO-7033 4"x 5-1/2" (Red Oak)
RO-7037 4"x 5-1/2" (Red Oak)
RO-7039 4"x 4" (Red Oak)

OAK PLUGS



RO-9001 (3/8")
RO-9002 (1/2")
RO-9003 (5/8")
RO-9004 (3/4")
RO-9005 (1")
RO-9006 (1-1/4")
RO-9007 (1-1/2")

NEWEL FASTENER S-9403



Sure Tile

NEWEL FASTENER S-9401



Key Lock

NEWEL CAP SQUARE CAP-4000

3-1/4" Square
3/4" x 1" dowel



RAIL BOLT KIT S-9600

(Includes hex nut, spacer and 1" Red Oak plug)



RAIL BOLT DRIVER S-9600-D

(fits machine thread)



sold individually

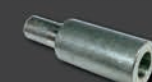
DOWEL SCREW C-905-2

(25 per bag)



DRIVER C-905-2D

(fits wood screw thread)



sold individually



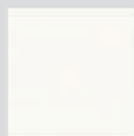
Maple

Poplar

White Oak



Red Oak (RO)



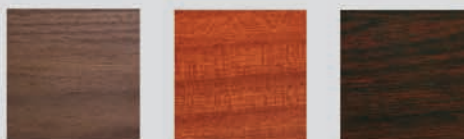
Prefinished White (PG)



Hickory/Pecan

Clear Alder

American Cherry



Walnut

Sapele Mahogany

Brazilian Cherry

Wood Products

All wood products are stocked in Red Oak(RO) or Prefinished White(PG) unless otherwise noted.

Domestic and Exotic Wood Species

All wood products in non-stock species are available by special order.



Custom Fabrication & Powdercoating

We specialize in modifying our standard iron components to suit the needs of your specific project. Whether your project involves balusters to be extended, panels modified to ensure code compliance or matching one of our powdercoated finishes or patinas we can help.



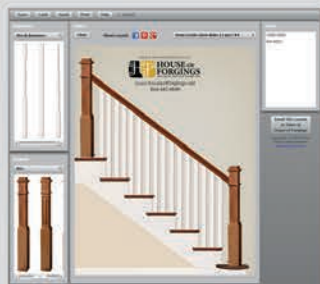
Marketing Literature

We offer a wide array of marketing literature designed to support product sales: product catalogs, brochures, flyers, postcards and customized literature are available through our authorized dealer program.



Sales Displays & Product Samples

Our wide variety of sales displays will provide you with the tools to sell products. We have sizes to fit your floor space. Custom displays are also available.



Software & Design

Stair Artist stair design tool makes it easy to plan your staircase project. Our extensive library of CAD images and product photos will aid and inspire you in designing your staircase.

16684 Air Center Blvd.
Houston, Texas 77032
Toll Free 866.443.4848 Fax 281.443.1133
www.houseofforgings.net

Please contact us for more detailed information
or for a listing of distributors near you.

HOUSE OF FORGINGS STAIR & RAILING PRODUCTS AUTHORIZED DEALER



YOUR STAIR & RAILING CO.

HOUSTON	P 281.209.0000	F 281.209.0067
AUSTIN	P 512.973.8373	F 512.973.9919
SAN ANTONIO	P 210.521.4808	F 210.521.7618
DALLAS	P 817.701.2006	F 817.701.2020

16684 Air Center Blvd. **Houston**, TX 77032
8606 Wall St. Suite 200 **Austin**, TX 78754
2520 N Great Southwest Pkwy.
Suite 104 **Grand Prairie**, TX 75050

PARTS SALES - INSTALLATION - REMODEL
CUSTOM IRON FABRICATION - CUSTOM WOOD COMPONENTS
STAINLESS STEEL SYSTEMS - GLASS SYSTEMS - FLOATING SYSTEMS

VISIT OUR RETAIL STORE & SHOWROOM TODAY

www.ironwoodusa.com

STAIR & RAILING PRODUCTS BY

